

# EnVision Centers, PHAs, and FQHCs-- Opportunities for Collaboration to Improve Resident Health

## National Center for Health in Public Housing

- Robert Burns, MPA, Director
- Saqi Maleque Cho, DrPH, Director Policy, Research and Health Promotion

HUD Region 3  
May 26, 2020

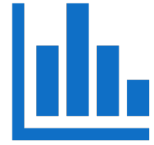


# National Center for Health in Public Housing



This presentation is supported by the Health Resources and Services Administration (HRSA) of the U.S. Department of Health and Human Services (HHS) as part of an award totaling \$608,000 with 0 percent financed with non-governmental sources. The contents are those of the author(s) and do not necessarily represent the official views of, nor an endorsement, by HRSA, HHS, or the U.S. Government. For more information, please visit [HRSA.gov](http://HRSA.gov).

# Agenda



Background on Health Centers and Public Housing Residents



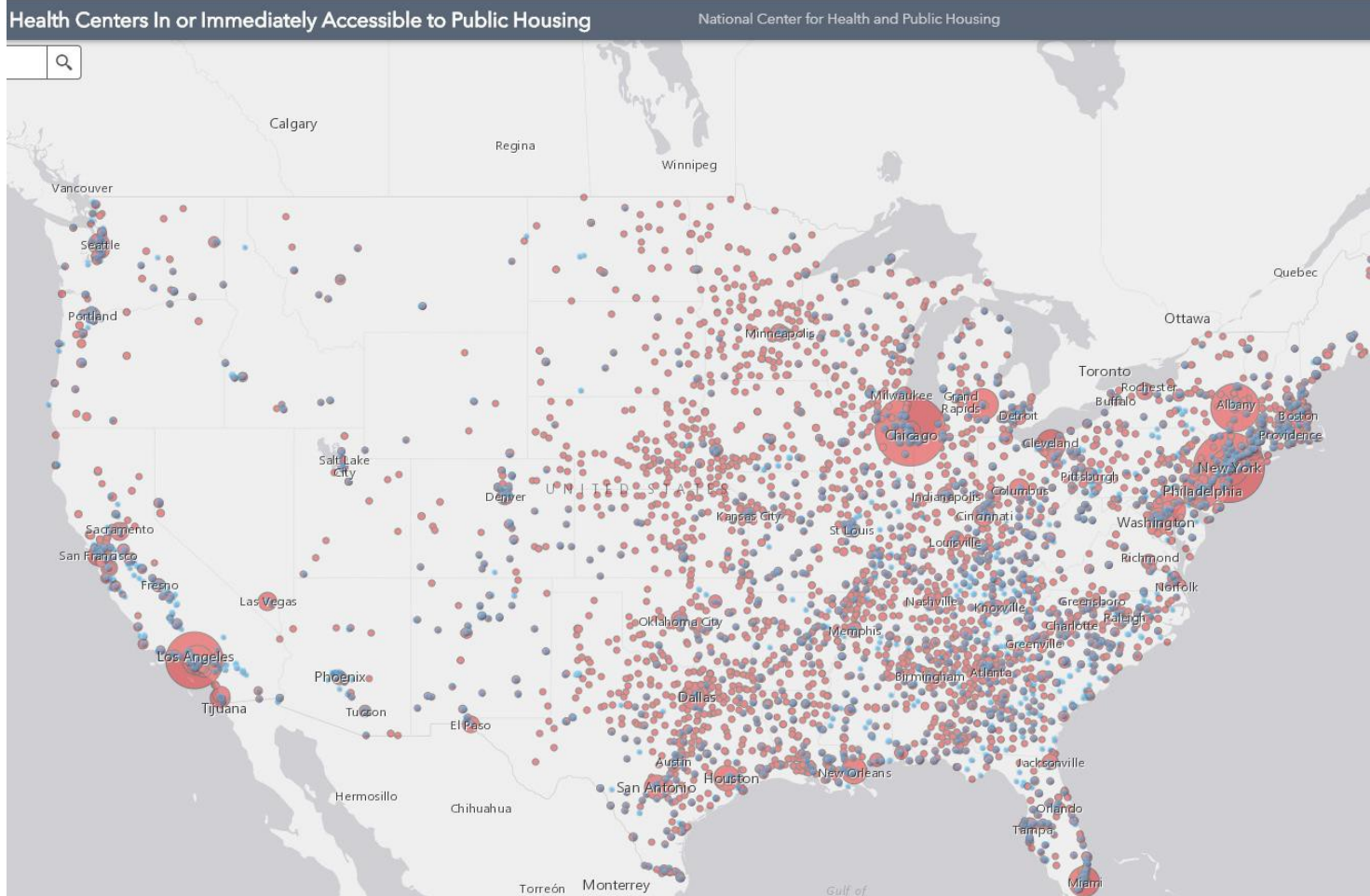
Impact of Housing on Health



Opportunities for Collaboration



Discussion



## Health Centers close to Public Housing

- 1,400 Federally Qualified Health Centers (FQHC)=28.4 million
- 11,000 FQHC Sites
- 385 FQHCs In or Accessible to Public Housing= 4.4 million patients
- 107 Public Housing Primary Care (PHPC) = 817,123patients
- Over 200,000 Health Center Employees Nationwide

[www.nchph.org](http://www.nchph.org)



# Key Health Center Characteristics

---

- Not-for-profit (public or private)
  - Provide a Comprehensive Scope of Services
  - Located in or Serve a High Need Community-Medically Underserved Area or Population
  - Govern with Community Involvement (Board is 51% Users/Patients)
  - Treat Parties Regardless of Ability to Pay
- 
- Programs focused on Public Housing Residents
  - Health Centers near Public Housing in Underserved areas
  - Long Standing Relationships with Public Housing Agencies

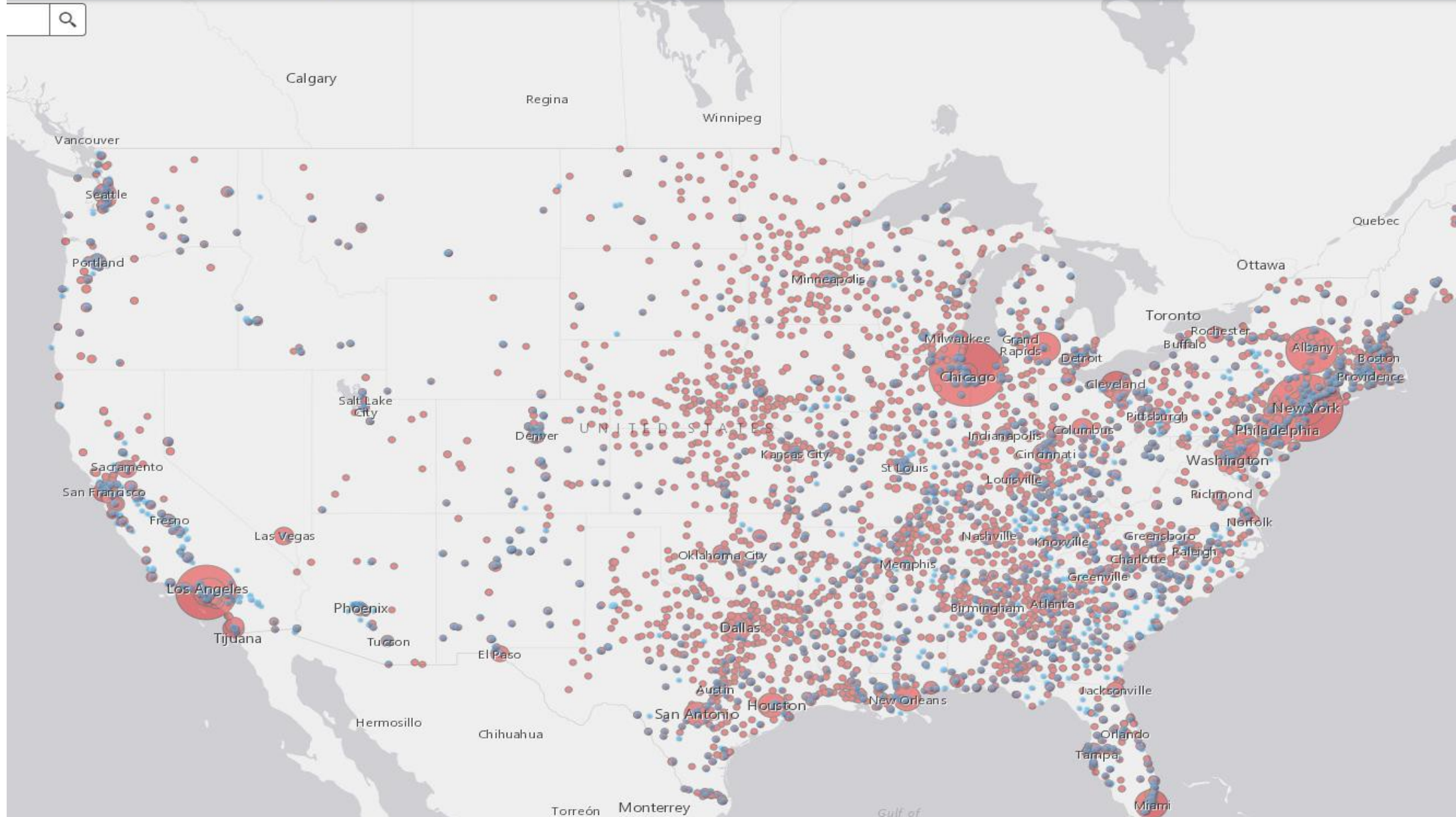
# Patient Centered Medical Home

---

- Comprehensive Care
- Patient-Centered
- Coordinated Care
- Accessible Services
- Quality and Safety

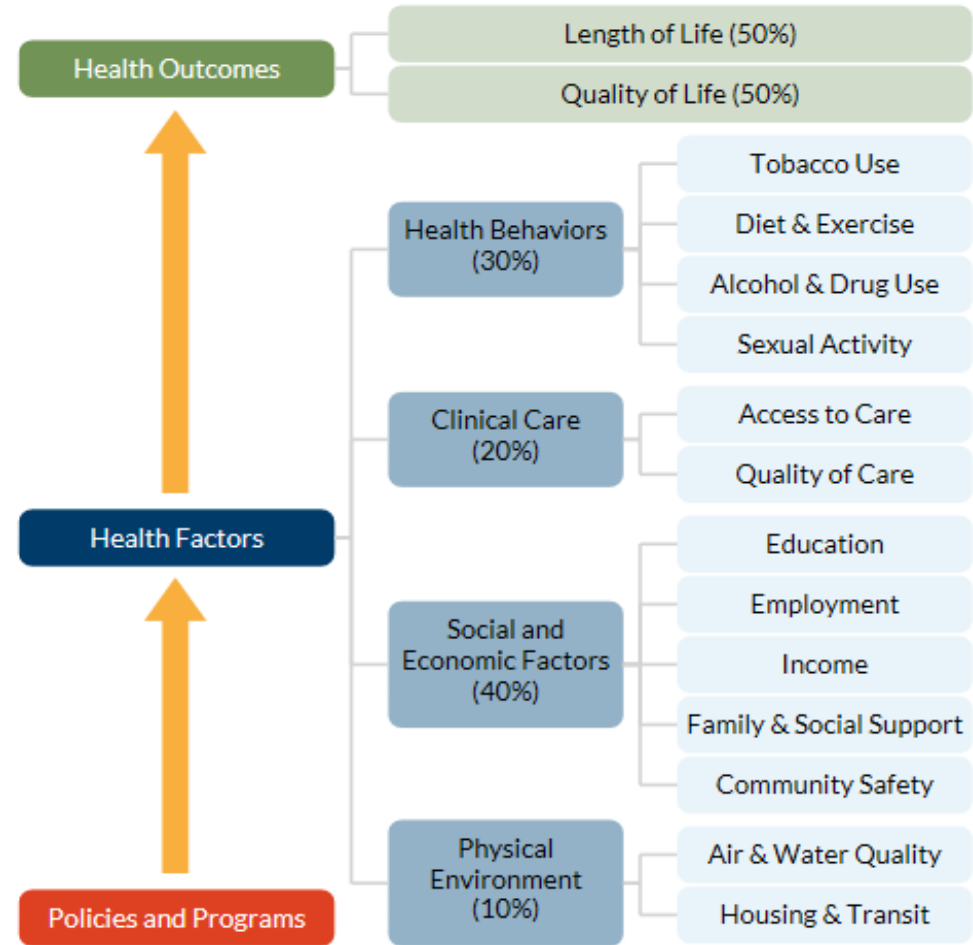
# Health Centers In or Immediately Accessible to Public Housing

National Center for Health and Public Housing





# Impacts of Housing on Health

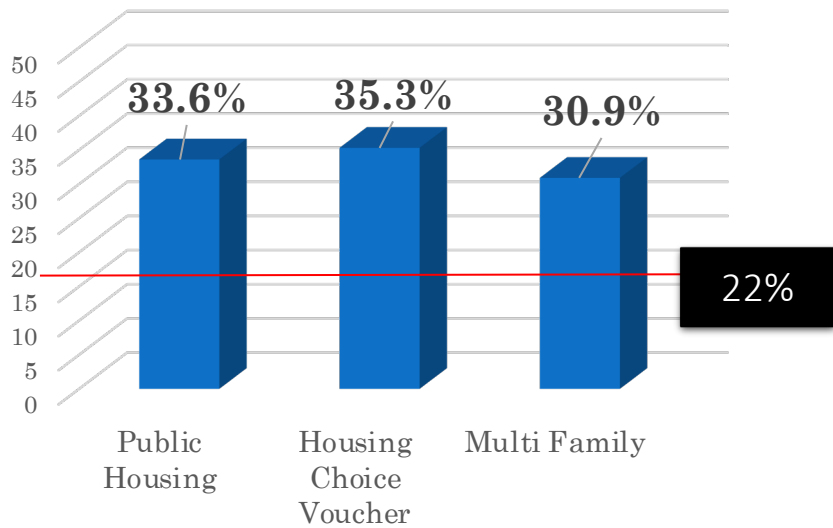


County Health Rankings model © 2014 UWPHI

# A Health Picture of HUD-Assisted Adults, 2006-2012

Adults in HUD-assisted housing have higher rates of chronic health conditions and are greater utilizers of health care than the general population.

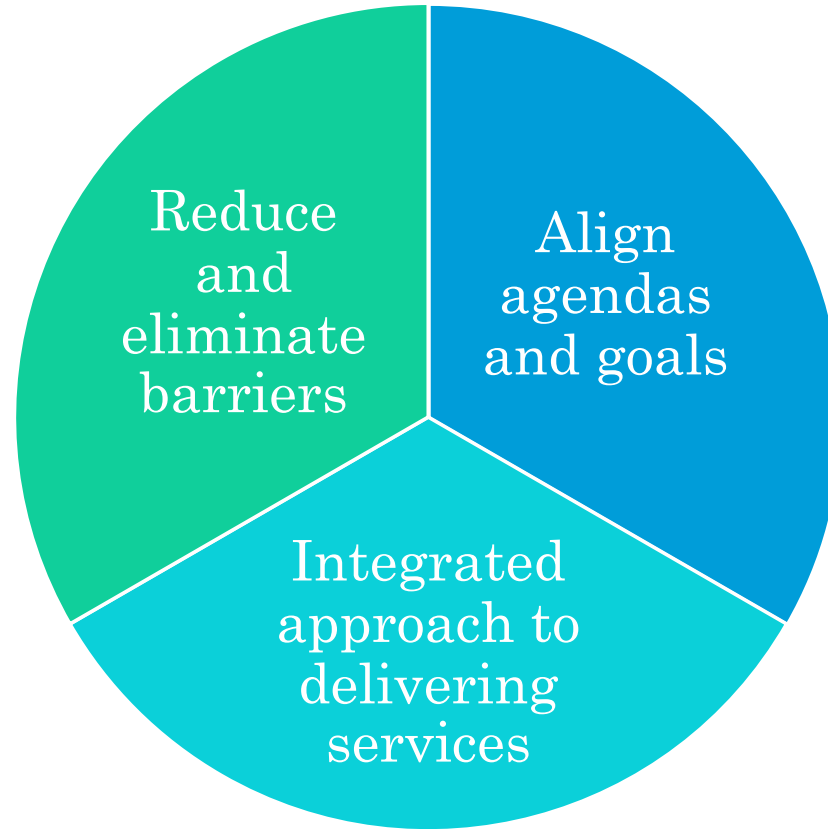
**Adult Smokers with Housing Assistance**



Source: Helms VE, 2017

	HUD-Assisted	Low-income renters	All Adults
Fair/Poor Health	35.8%	24%	13.8%
Overweight / Obese	71%	60%	64%
Disability	61%	42.8%	35.4%
Diabetes	17.6%	8.8%	9.5%
COPD	13.6%	8.4%	6.3%
Asthma	16.3%	13.5%	8.7%

# Reasons for Partnership



# HRSA Health Center Goals 2022

**1 GOAL 1** → Improve access to quality health care and services

**2 GOAL 2** → Foster a health care workforce able to address current and emerging needs

**3 GOAL 3** → Enhance population health and address health disparities through community partnerships

**4 GOAL 4** → Maximize the value and impact of HRSA programs

**5 GOAL 5** → Optimize HRSA operations to enhance efficiency, effectiveness, innovation, and accountability



# Case examples



HEALTH INSURANCE  
COVERAGE



SENIOR HEALTH  
PROGRAMS



COMMUNITY SAFETY

# Chicago, Illinois

“Part of our mission at the Chicago Housing Authority is to support stability and quality of life. So, what’s more important to that than health?”- CHA

## Background:

- TCA was having issues engaging residents.
- TCA approached CHA about partnering.
- The two combined outreach efforts to better access and educate residents about healthcare coverage

## Impact:

- 2 FTE public housing residents trained as outreach workers
- 1,000+ enrolled in health insurance
- 3,000+ health education sessions

## Keys to Success:

- Resident Champion
- Communication
- Shared Knowledge

## Future

- Working Group- 25 organizations
- Youth/Adult Fitness Program
- Cooking Classes,
- Community Gardening Projects,
- Food Accessibility Initiatives,
- Community Health Education Workshops,
- Mobile Health Unit





# Casa Maravilla- Senior Center

- Public- Private Partnership
- Senior Housing- 73 units; age 55+
- Benefits Enrollment Center- 2,400 seniors annually
- Monthly Wellness Programs



“It’s been a remarkable experience, one of the things that it enables us to do is to talk to people in the community and young people about this line of work and how rich the variety is and how meaningful and fulfilling it is to work with older adults.”

Alivio Program Manager





## Flint, Michigan

### **Drug Court, Mental Health Court, Veterans Courts**

- Genesee Health Systems staff embedded in the court cross-references booking report with EMR
- Individuals released into appropriate services
- MSU evaluation showed
  - 80% reduction in recidivism
  - \$500,000/yr savings jail costs
  - 50% reduction in psychiatric and sub-acute detox services





- Prenatal Visits
- Annual Physicals for Adults
- Hearing and Vision Screening
- Lead Free Homes with Children < 6 years old
- Veteran Enrollment at VA Hospitals & Clinics
- Screening for Blood Pressure, Diabetes, Glaucoma, Cancer and lead

# EnVision Centers Demonstration Communities

Diverse Communities Nationwide

State	City	Housing / Community Partnering Organization	Municipal Partnering Agency
California	San Diego	San Diego Housing Commission & San Diego Workforce Partnership	City of San Diego
Connecticut	Hartford	Hartford Housing Authority & Catholic Charities	City of Hartford
District of Columbia	Washington	District of Columbia Housing Authority	District of Columbia
Illinois	Chicago	A Safe Haven Foundation & All Chicago Making Homelessness History	City of Chicago
Kansas	Kansas City	aSTEAM Village, Kansas City Kansas Housing Authority	City of Kansas City, Kansas

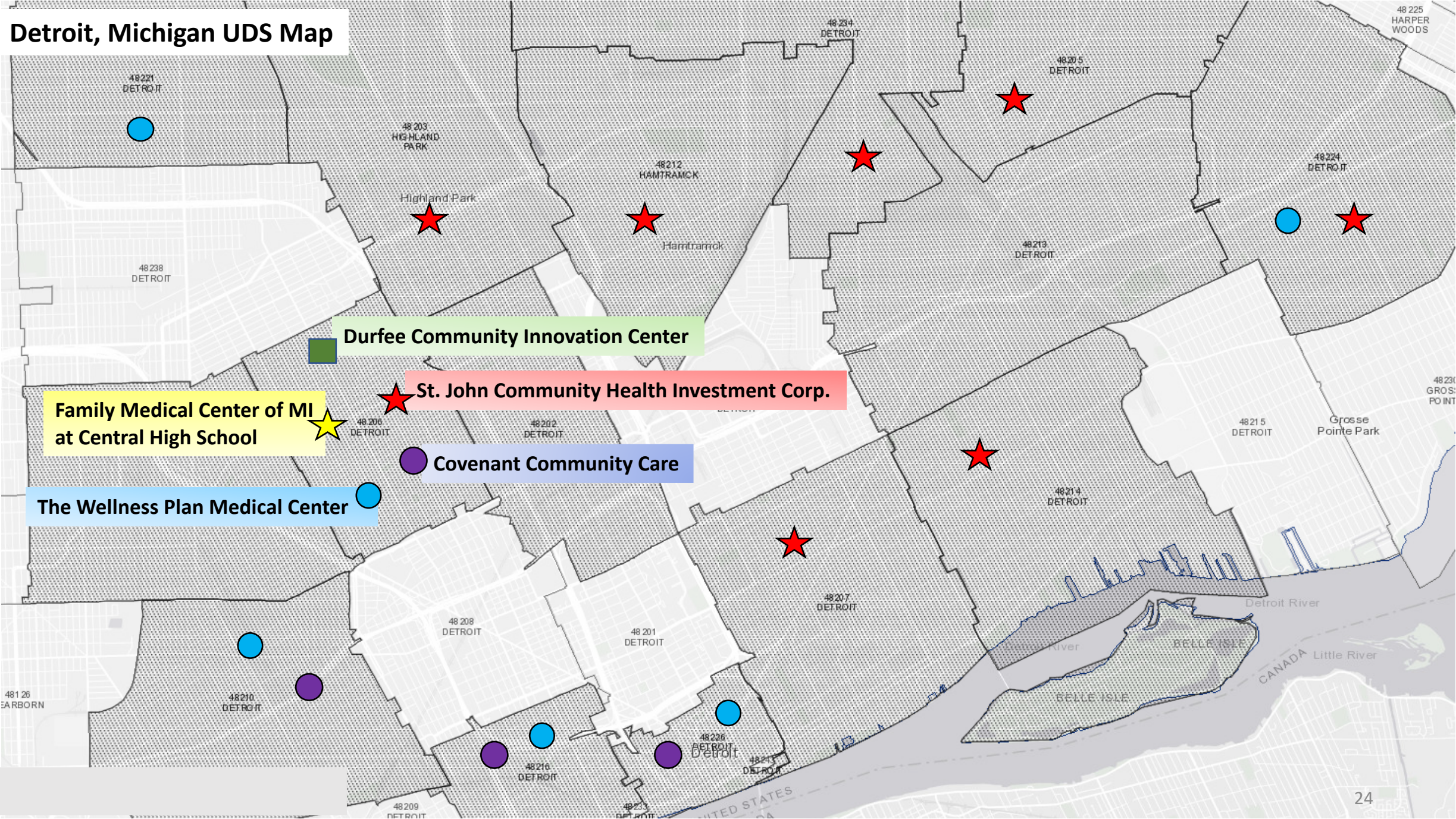


Kentucky	Bowling Green	Housing Authority of Bowling Green & WROTE, Inc.	City of Bowling Green
Michigan	Detroit	Detroit Housing Commission	City of Detroit
	Detroit	Life Remodeled	City of Detroit
	Inkster	Inkster Housing Commission	City of Inkster
Missouri	Kansas City	aSTEAM Village, Kansas City Missouri Housing Authority	City of Kansas City, Missouri
New Jersey	Phillipsburg	Community Prevention Resources of Warren County & Phillipsburg Housing Authority	Town of Phillipsburg
North Carolina	Hickory	Western Piedmont Council of Governments Regional Housing Authority	City of Hickory

North Dakota	Grand Forks	Grand Forks Homes, Inc. & Grand Forks Housing Authority	City of Grand Forks
Ohio	Youngstown	United Returning Citizens Inc & Youngstown Metropolitan Housing Authority	City of Youngstown
Oklahoma	Choctaw Nation	Choctaw Nation & Choctaw Nation Housing Authority	
Pennsylvania	Philadelphia	Philadelphia Housing Authority	City of Philadelphia
Texas	Fort Worth	Fort Worth Housing Solutions	City of Fort Worth
Washington	Spokane	Spokane Area Workforce Development Council & Spokane Housing Authority	City of Spokane



# Detroit, Michigan UDS Map



**Family Medical Center of MI at Central High School**

**Durfee Community Innovation Center**

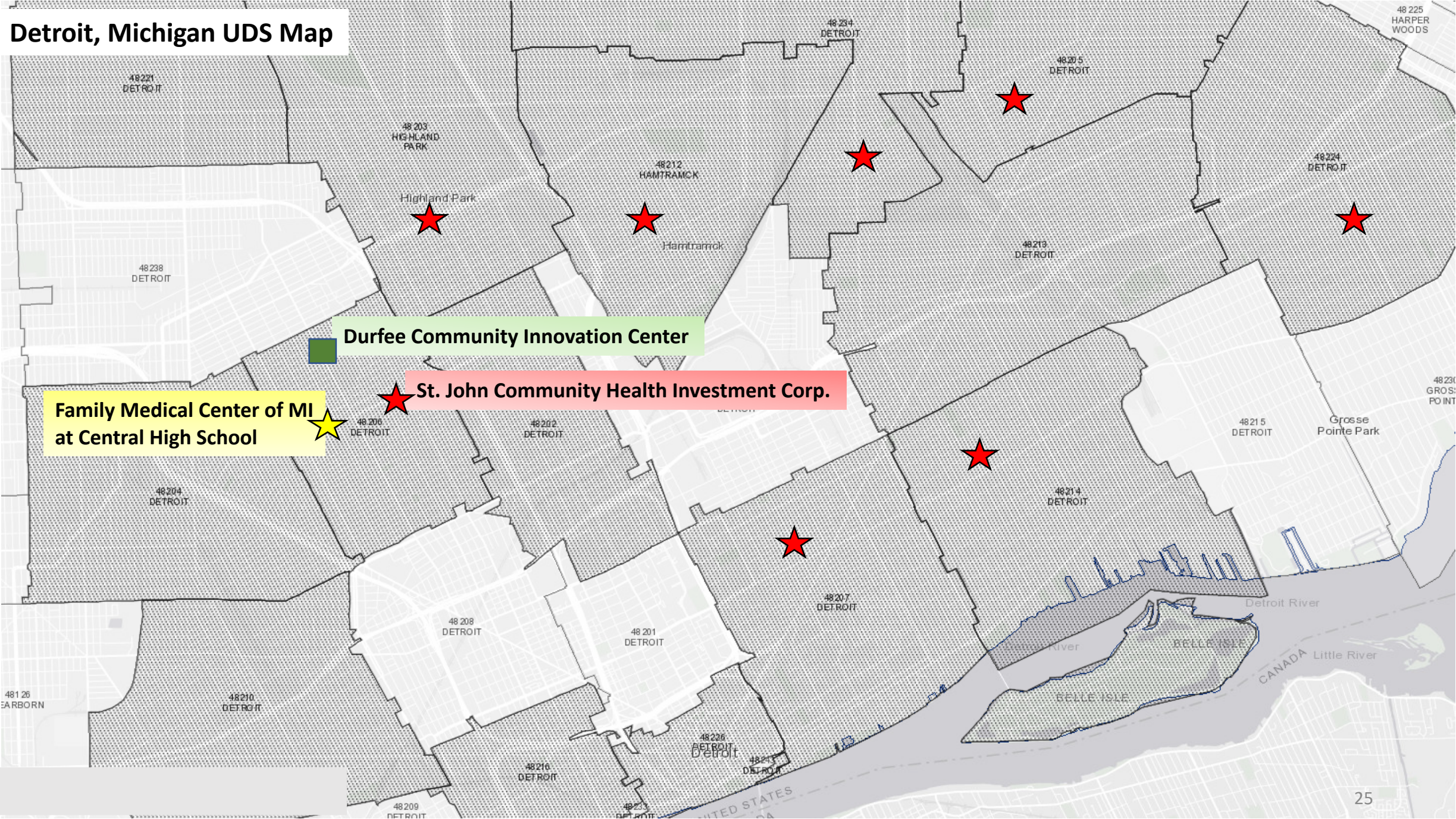
**St. John Community Health Investment Corp.**

**Covenant Community Care**

**The Wellness Plan Medical Center**



# Detroit, Michigan UDS Map



**Family Medical Center of MI at Central High School**

**Durfee Community Innovation Center**

**St. John Community Health Investment Corp.**

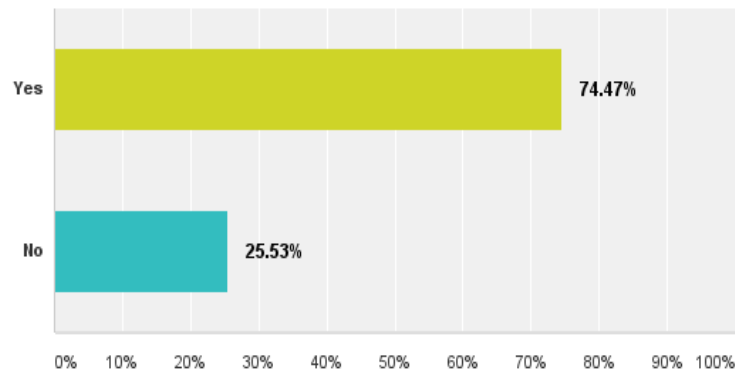


# COLLABORATION between Health Centers and Public Housing Authorities

64% of all Health centers in or accessible to PH have collaborative agreements with a PHA

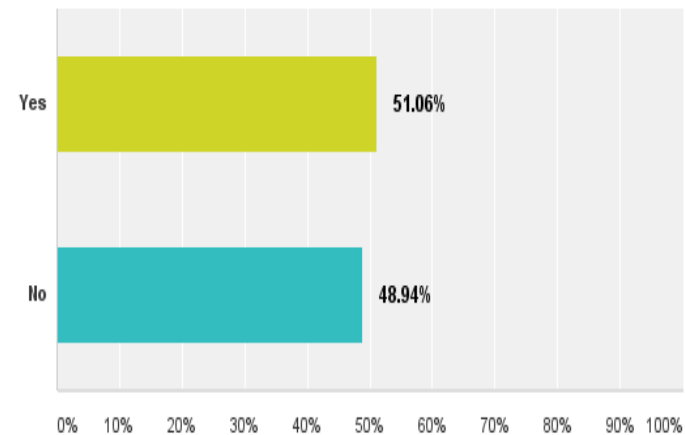
**Q43 Are you familiar with a new HUD rule prohibiting lit tobacco in all living units, outdoor areas (25 feet from the housing) and indoor common areas in public housing?**

Answered: 47 Skipped: 14



**Q44 Are you collaborating with your PHA to implement a smoke-free policy?**

Answered: 47 Skipped: 14



Source: NCHPH Needs Assessment 2016

# Opportunity

Economic  
Empowerment

Educational  
Advancement

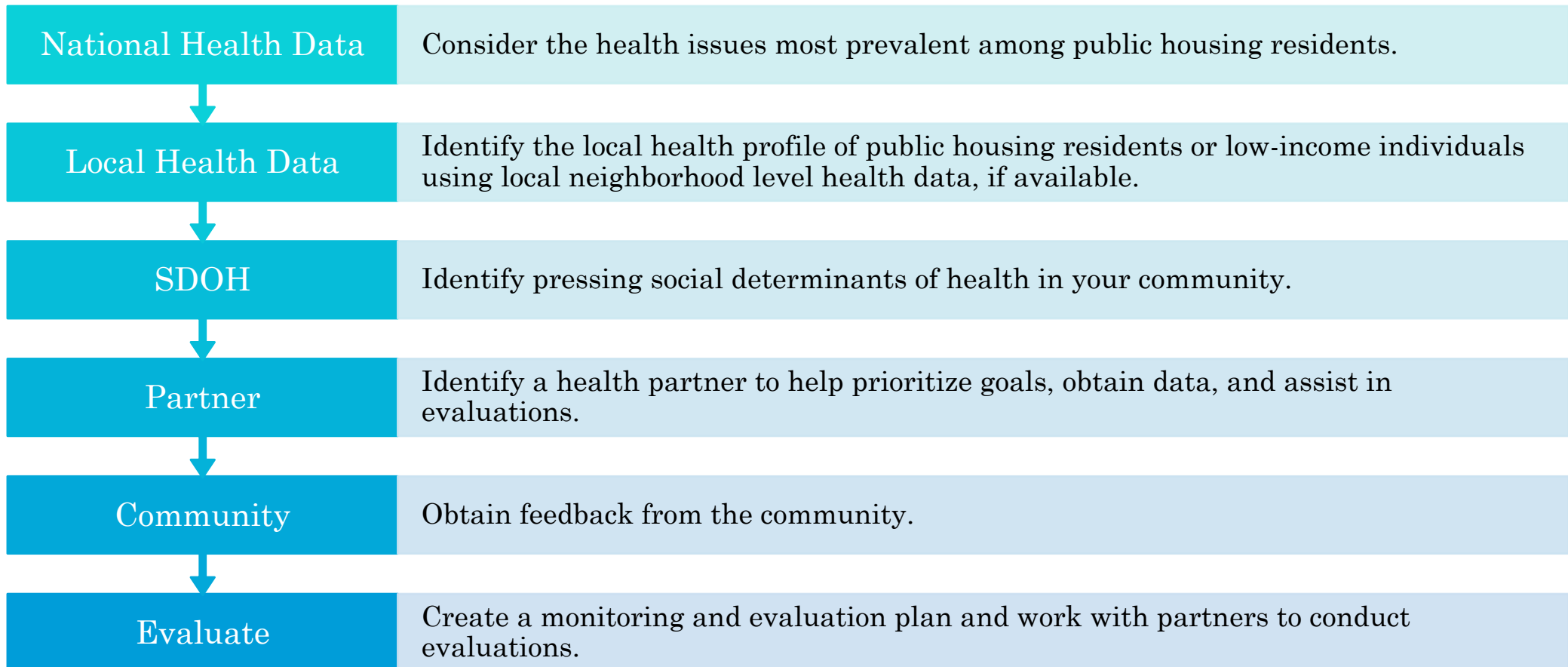
Health and  
Wellness

Character and  
Leadership

## EnVision = SDOH

- **Economic Empowerment**
  - Community Health Workers
- **Health and Wellness Pillar**
  - Increase the number of pre-natal wellness visits to Federally Qualified Health Centers (FQHC)
  - Increase the number of annual physicals at FQHC (adults).
  - Increase vision and hearing screening among pre-school aged kids.
  - Increase number of homes with children under the age of 6 years that are made lead free.
  - Increase Veteran enrollment at Federal VA Hospitals and clinics.
  - Increase blood pressure/diabetes/glaucoma/cancer and lead screening.

# Guidance on How to Choose a Health and Wellness Goal





# Forming Partnerships: EnVision Centers & Health Centers

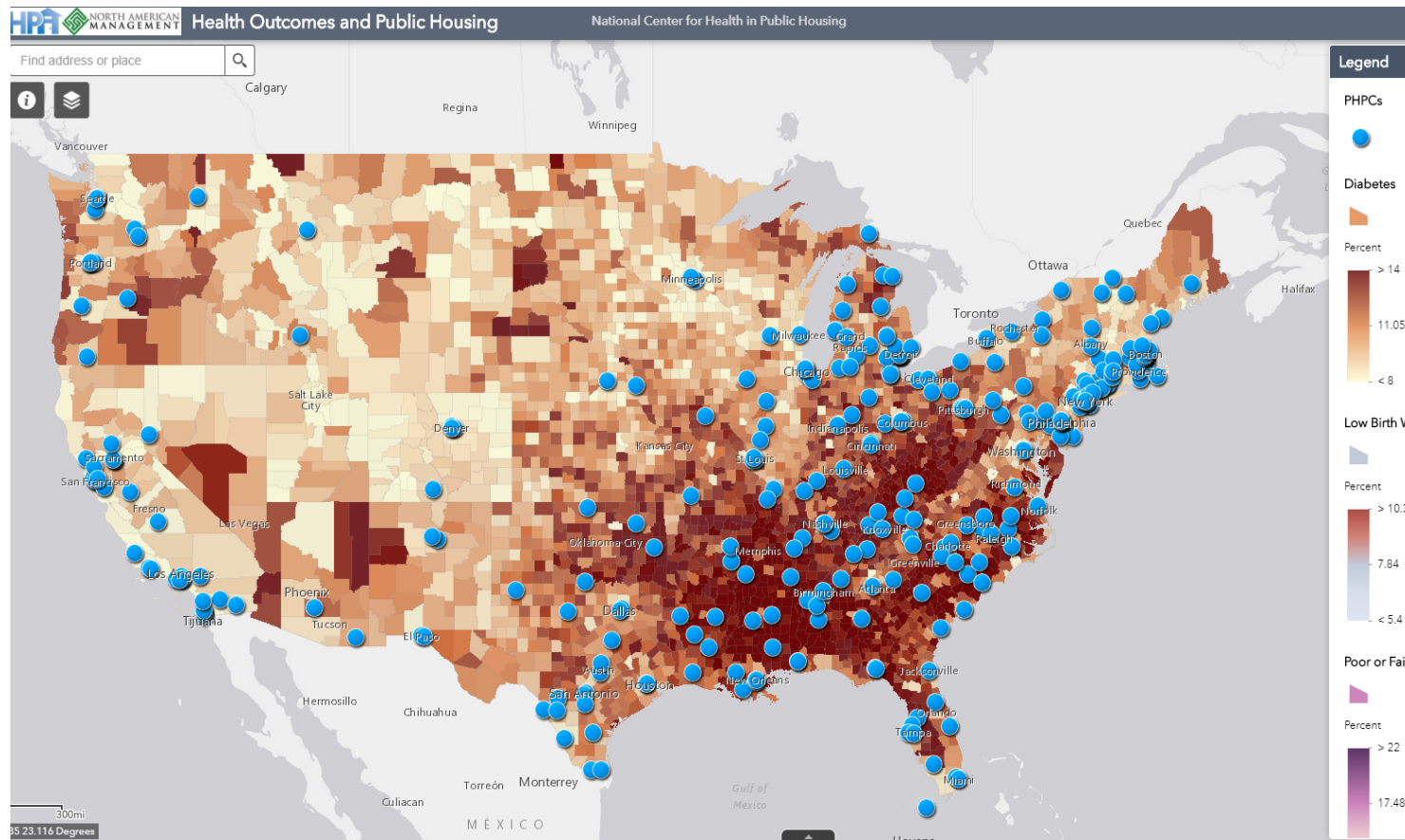
- Identify a Health Center Partner
- Clarify the service area and population needs
- Explore the type services the Health Center can provide-
  - Short Term and Long Term
  - New Access Point, Change in Scope
  - On-site clinic, Mobile Unit, or Shuttle
  - Enabling Services
  - Case Management
- Establish Goals
- Develop a Memorandum of Understanding
- Establish membership on each others' boards or advisory groups
- Evaluate and Continuous Improvement

# Finding a Health Center Partner

- EnVision and Health Center Directory
- [HRSA's Find a Health Center](#)
- [NCHPH Interactive Map](#)



# Visit our Interactive Maps at [www.nchph.org/training-and-technical-assistance/maps/](http://www.nchph.org/training-and-technical-assistance/maps/)



- Diabetes in Public Housing Primary Care
- Health Behaviors and Public Housing
- Health Centers In or Immediately Accessible to Public Housing Map
- Health Center Program Grantees and Public Housing Developments
- Health Outcomes and Public Housing
- Socioeconomic Health Factors and Public Housing

# Visit: [www.findahealthcenter.hrsa.gov](http://www.findahealthcenter.hrsa.gov)



## COVID-19 Notice

Health centers are an important component of the national response to the COVID-19 pandemic. However, your local health center may not currently have COVID-19 testing capability (e.g., access to tests and/or access to a **nearest health center or health department** to discover their availability for COVID-19 screening and testing. In addition, please note many school-based health centers may not be operating because of school closures.

Health Centers can assess whether a patient needs further testing, which may be done over the phone or using telehealth. Individuals may also receive primary health care services at their local health center at a reduced status.



## Find a Health Center



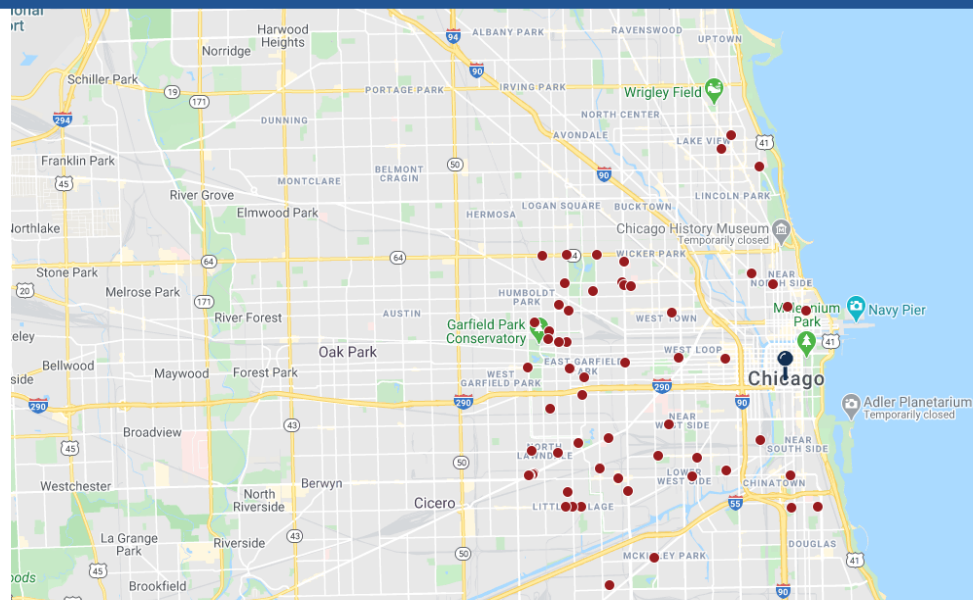
About the Health Center Program

Chicago, IL, USA

### Search Results:

Filter Results

<b>HEARTLAND ALLIANCE HEALTH - JAMES WEST CLINIC</b>	+
Chicago, IL, 60607-2217	
<b>LCHC AT PACIFIC GARDEN MISSION</b>	+
Chicago, IL, 60607-5201	
<b>TEMPORARY SITE - HOTEL 166</b>	+
Chicago, IL, 60611-2924	
<b>JAMES AND CATHERINE DENNY PRIMARY CARE AND PREVENTATIVE MEDICINE CENTER</b>	+
Chicago, IL, 60654-3231	
<b>LCHC AT BREAKING BREAD</b>	+
Chicago, IL, 60610-7635	
<b>UNIVERSITY OF ILLINOIS MEDICAL CENTER - MILE SQUARE HEALTH CENTER, NATIONAL TEACHERS ACADEMY HEALTH AND WELLNESS CENTER</b>	+
Chicago, IL, 60616-2001	



- Find a Health Center helps you search for [HRSA-funded health centers](#).
- The search area is set to a 5 mile radius when you begin, but you can set a wider search area if you like.
- You can export results to a printable PDF file. Only the 25 closest sites will appear in the PDF export.

# Summary/Recommendations

- Collaborate: Communicate -- Educate -- Engage -- Prioritize
- Establish Reciprocal Partnerships, e.g., memberships on boards, advisory groups of PHAs, FQHCs and Other CBOs
- Environmental Scan and Asset Mapping
- Engage the community together: PHA, Envision, and FQHC
- Use Annual Resident Meeting and lease signing to refer residents to Health Center(s)
- Leverage ALL Resources
- Case Management- identify needs & monitor progress
- Partnership building and Promotion of EnVision Centers

# Partnership Opportunities

- EnVision Centers Support and Promotion
- PHA and Health Center Partnerships
- Ensuring Health of Residents Impacted by Changes in PH
- Cross Sector Collaborations: Govt, National and Local

Partner  
with  
NCHPH  
and  
improve  
outcomes  
together

Advisory Groups

Learning Collaboratives

Research

Working Sessions

Information Sharing



Join Our  
Mailing List  
and Receive

HRSA Updates

Medicare Updates

Funding Opportunities

Resources and Services

Webinars

# Visit Our Website: [www.nchph.org](https://www.nchph.org)



Learning Collaboratives



Webinars



Publications



Provider and Resident-Centered Factsheets



Mapping



Newsletters



Annual symposiums



One-on-One



# Social Media

- **Follow us on Twitter**  
<https://twitter.com/NCHPHorg>
- **Follow & Like us on Facebook**  
<https://www.facebook.com/NCHPH.org/>
- **Subscribe to our YouTube channel**  
<http://www.youtube.com/namgthealth>



# Contact Us

Robert Burns Director bob.burns@namgt.com	Jose Leon, MD, MPH Chief Medical Officer jose.leon@namgt.com
Saqi Maleque Cho, DrPH, MSPH Director of Research, Policy, and Health Promotion saqi.cho@namgt.com	Fide Pineda Sandoval Health Research Analyst fide@namgt.com
Please contact our team for Training and Technical Support 703-812-8822	



[www.nchph.org](http://www.nchph.org)