

Flu LEAD (Linkages to End Access Disparities)

A pilot project to increase influenza vaccination coverage
among HUD-assisted residents

Speakers

- Karen Ingvoldstad, Health Resources and Services Administration
- Jason Amirhadji, U. S. Department of Housing and Urban Development
- Justin Mills, Agency for Healthcare Research and Quality



MUTE



CHAT



RAISE HAND



Q&A

Agenda

- I. Overview of Healthcare Resilience Working Group
- II. Public Housing Overview
- III. Flu LEAD inter-agency pilot project
- IV. Discussion and Q&A

Background: Healthcare Resilience Working Group

- One of five work groups supporting the Unified Command, the national COVID-19 response led by the U.S. Department of Health and Human Services
- HRWG Mission: optimize healthcare delivery for COVID and non COVID patients in all health settings
- Work group broken into five teams, each with a focus on different aspect of health care system: hospitals, long-term care facilities, emergency medical services, health care workforce, and outpatient settings (ambulatory settings)
- Flu LEAD is a priority pilot project of the Ambulatory Team of the HRWG
- In listening sessions with many national associations and organizations, HRWG heard about concerns for communities and individuals related to seasonal influenza vaccination in the fall within the context of COVID-19
- Historically, non-white populations of adults have lower flu vaccination rates (30-50%)
- Flu vaccination is more important than ever in the 2020-2021 influenza season!

Flu vaccination can reduce personal risk of respiratory disease, reduce spreading respiratory disease to family, friends, and within social structures, and contributes to the collective burden-reduction across the healthcare system

US Dept Housing & Urban Development

HUD's mission is to create strong, sustainable, inclusive communities and quality affordable homes for all

HUD Strategic Goals

- Strengthen the Nation's Housing Market
- Meet the Need for Quality Affordable Rental Homes
- Utilize Housing as a Platform for Improving Quality of Life
- Build Inclusive and Sustainable Communities Free From Discrimination
- Transform the Way HUD Does Business



HUD Housing Assistance Programs



Public Housing (PH): Federally funded and regulated but managed by local housing authorities who own the buildings

Housing Choice Voucher (HCV): HUD's largest rental assistance program; Monthly rental assistance payment to assist very low income families in renting housing on the privately owned rental market; Popular with policymakers

Multifamily (MF): Contract is between HUD and owners of development; If tenant moves, assistance stays with owner

HUD Housing Assistance



10 million individuals receive assistance; 4 million children

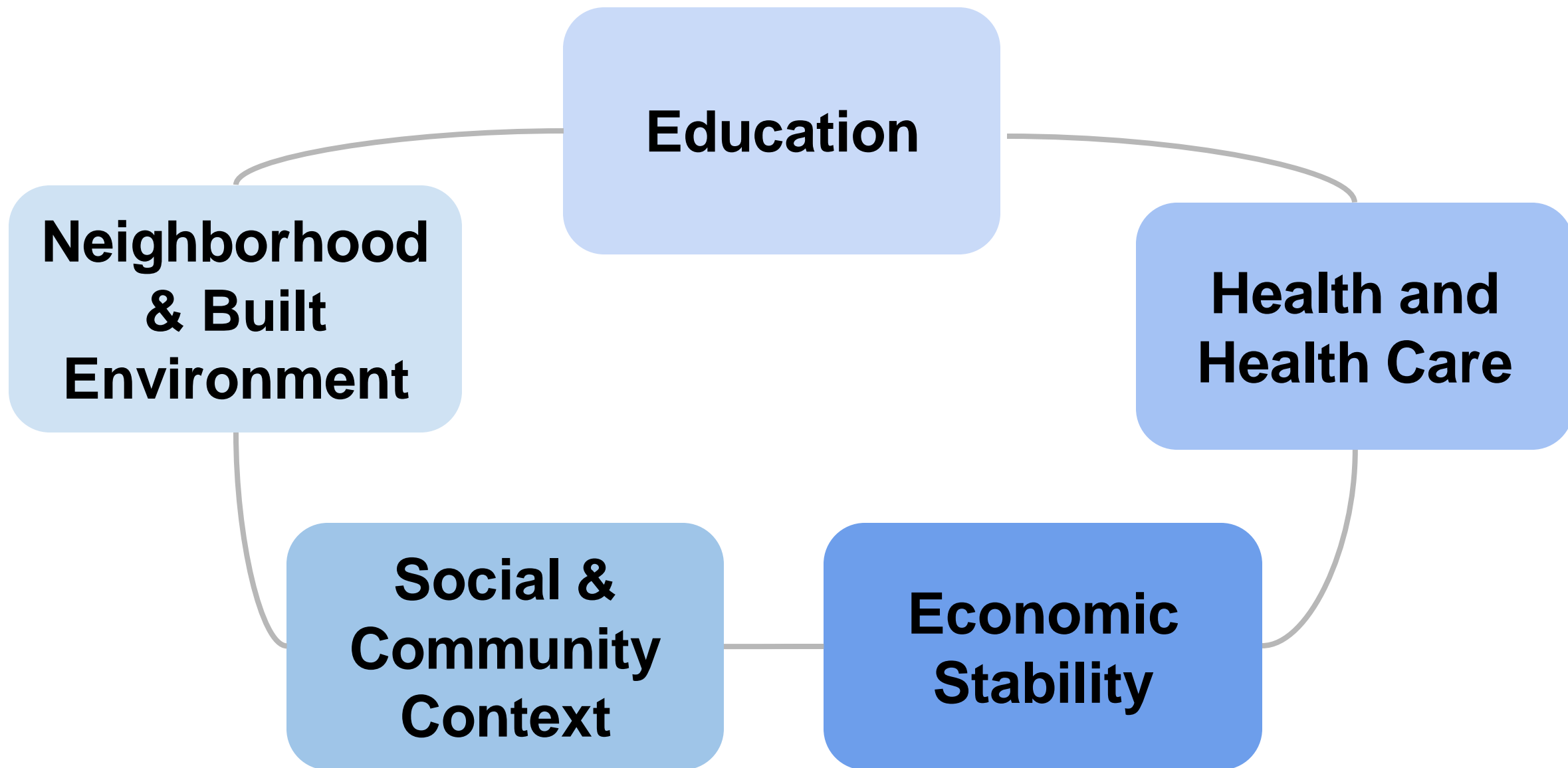
Housing assistance is not an entitlement: Housing assistance does not serve everyone who is eligible. Only one quarter of those eligible actually receive assistance.

Elderly and disabled make up over half of tenant households

Housing expenses crowd out other expenses

Program Eligibility: Citizenship, gross income, and household size

Race/Ethnicity: 64% Minority; 17% Hispanic



Housing as a Social Determinant of Health: *Healthy People 2020*



PIH

OFFICE OF PUBLIC & INDIAN HOUSING



Community & Supportive Services (CSS)

Mission: To support the work of **partners** and PHAs in **reducing barriers** and **improving access** to opportunities for communities, families, and residents to improve their **quality of life**.

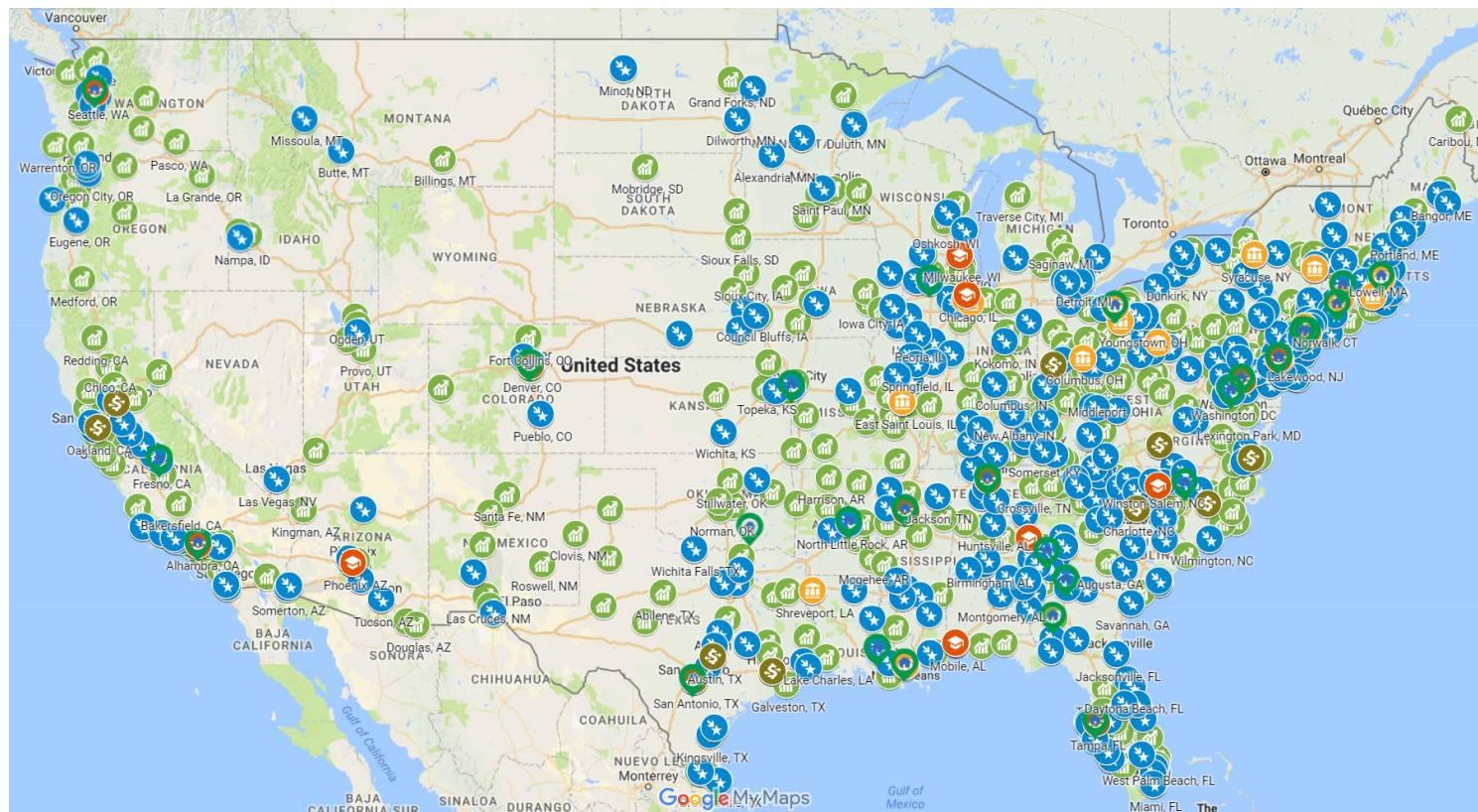


PIH

OFFICE OF PUBLIC & INDIAN HOUSING



PHA Investments

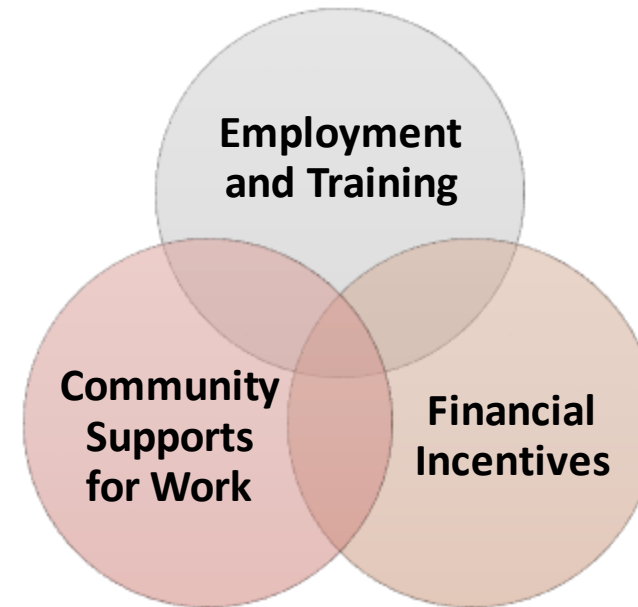


-  FSS
-  Jobs Plus
-  ROSS
-  Project SOAR
-  JRAP
-  ConnectHome

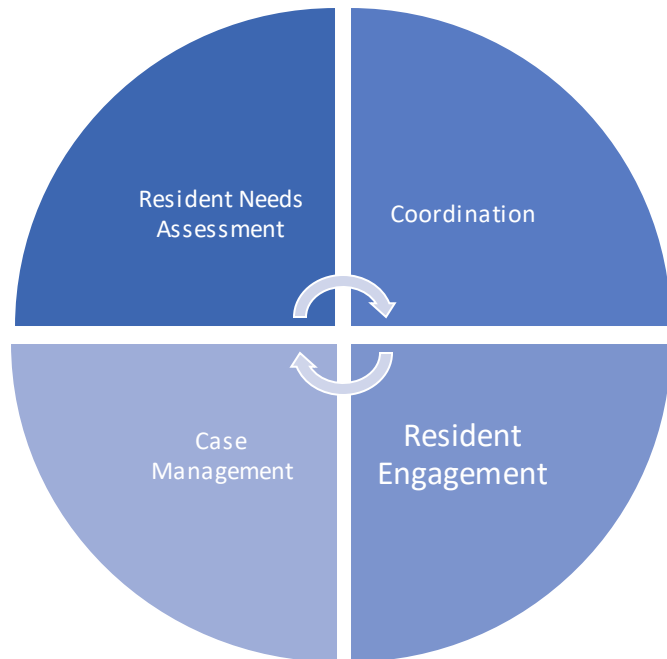
- **700+ PHAs served by CSS**
- **40+ Tribes**
- **Dozens of nonprofits & resident associations**

Jobs Plus

- 44 sites in 6 cohorts
- Builds opportunity for Public Housing Residents:
 - Supports locally-based approaches
 - Increases earnings
 - Improves employment outcomes



Resident Opportunity & Self-Sufficiency (ROSS)



- Just announced \$36 million to 137 grantees
- 350+ grantees overall
- 3-year grants
- Funds Service Coordinators who:
 - Provide case management
 - Assess resident needs
 - Build partnerships and coordinate services with local providers
- NOFA focuses on areas of need:
 - Education
 - Financial Literacy
 - Health & Wellness
 - Elderly & Disabled
 - Re-Entry
 - Employment
 - Substance Abuse

Family Self-Sufficiency (FSS)



Administering an Effective Family Self-Sufficiency Program:

A Guidebook Based on Evidence
and Promising Practices



U.S. Department of Housing and Urban Development
Office of Public and Indian Housing

FEBRUARY 2017

- Just announced \$80 million in renewal awards
- 700+ grantees
- Annual grants
- Provides motivational coaching to increase household earned income and achieve self-sufficiency through:
 - Comprehensive case management services
 - Family escrow account that grows as a family's earnings grow

EnVision Centers

Vision

Centralized hubs to support the four pillars of self-sufficiency within their communities
(Not limited to HUD-assisted residents or PHAs)

Target Communities

- Dynamic local leadership (i.e., personal commitment by mayor, tribal official, and/or PHA director)
- Existing place-based programs (e.g., ConnectHome, Opportunity Zones)

Benefits to EnVision Centers

- Assistance from HUD staff in meeting EnVision Centers' objectives to help low-income residents
- Assistance with Federal Agencies who support community development initiatives
- Assistance reaching a national nonprofit support network
- Coordination with a national EnVision Center peer-to-peer network





Current EnVision Centers

Visit www.hud.gov/envisioncenters for interactive map

Overview

Flu LEAD Pilot Project

Flu LEAD: Goal

Goal: Increase site-wide flu vaccine coverage by 50% during the 2020-2021 influenza season.

Objectives:

- Increase influenza vaccination coverage among HUD-assisted residents beginning in Fall 2020.
- Enhance health and health resiliency of residents of HUD-assisted communities.
- Foster partnerships between HUD-assisted communities and local HRSA-funded health centers.

Flu LEAD: Locations

HUD-assisted communities:

- Managed by hundreds of PHAs and multifamily owners across the country
- Served by HRSA-funded health centers (HC), including 108 Public Housing Primary Care (PHPC) awardees
- Successful sites will leverage aspects of HUD's place-based programs:
 - Partnership facilitators, such as program managers and service coordinators
 - Resident advocates, such as Community Coaches and community health workers
 - Meeting space, such as community centers and service sites

Flu LEAD: HRWG Activities

HRWG Activities

- Support site-level mapping of Health Centers and PHAs
- Develop a coordinated outreach effort to HRSA-funded health centers and PHAs, underscoring the importance of flu vaccination as a COVID-19 response measure to promote community health and maintain healthcare system capacity
- Collect and offer materials to support PHAs and health centers
- Convene a webinar series highlighting successful collaboration models, best practices and success stories from Flu LEAD partnerships

Flu LEAD: Phase 1 Project Activities

Housing Providers will:	Health Centers will:
<ul style="list-style-type: none">• Partner with Health Centers• Customize outreach materials• Engage resident leaders• Lead outreach campaigns• Provide community space	<ul style="list-style-type: none">• Partner with Housing Providers• Coordinate vaccination clinics• Provide vaccinations• Enroll patients• Manage patient relationships

Flu LEAD: Phase 2 Project Activities

Ongoing Activities to Support Community Health Resiliency

- Promote vaccine awareness among HUD-assisted communities, including the importance of childhood vaccines and COVID-19 vaccine.
- Promote awareness and linkage to COVID-19 testing, therapeutics, and vaccines.
- Identify/connect individuals in need of primary care and preventive services with local health centers.

Flu LEAD: Next Steps

- **If interested (Poll) or Email to Kingvoldstad@hrsa.gov**
 - Identify if have a current PHA partner, and if implement similar activities
 - Indicate any PHAs of interest, if applicable
 - HUD will reach out to PHA(s) to identify a partner
- **Joint introduction** to both PHA and health center from HUD/HRSA
- **Follow up:** After introduction, will check in with health centers and PHAs to make sure a connection made, or if any challenges
- **Periodic check in** identify, capture and share success stories from Flu LEAD sites
- **Save the Date: September 15** – Flu LEAD Kick-off Webinar for PHAs and Health Centers

Flu LEAD: What materials will be available



Recommendations and Reports

August 21, 2020

[Prevention and Control of Seasonal Influenza with Vaccines: Recommendations of the Advisory Committee on Immunization Practices—United States, 2020–21 Influenza Season](#)

This report describes influenza vaccination recommendations from the Advisory Committee on Immunization Practices for the 2020–21 influenza season in the United States.

[More>](#)



Centers for Disease Control and Prevention
CDC 24/7: Saving Lives. Protecting People™

All A-Z Topics

Search

Vaccines site 

Advanced Search 

Healthcare Providers / Professionals

Healthcare Professionals / Providers Home > Administration Tools > Vaccine Administration

Healthcare Professionals / Providers Home

Clinical Resources +

Administration Tools -

Vaccine Storage & Handling +

Vaccine Administration -

Review Immunization History

Guidance for Planning Vaccination Clinics Held at Satellite, Temporary, or Off-Site Locations

The purpose of this guidance is to assist with jurisdictional planning and implementation of satellite, temporary, or off-site vaccination clinics by public and private vaccination organizations. Other users may include public health preparedness professionals. The guidance primarily for storage, handling, administration, and distribution in stadiums, those held over multiple days and technical considerations. Consult your local health department for more information.



During COVID-19, healthcare providers are taking steps to keep you and your family safe.

Don't delay recommended vaccines.

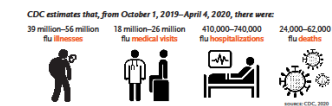
#CatchUpGetAhead

Learn more at [Vaccines.gov](https://www.vaccines.gov)

Communicating the Benefits of Seasonal Influenza Vaccine during COVID-19

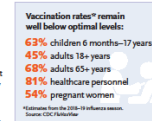
Influenza (flu) severity varies from year to year, but flu always brings serious consequences. The prevention of influenza and its associated consequences is important every year. Although the effectiveness of the flu vaccine can vary, overall the vaccine markedly lowers the risk of influenza-related illness, hospitalization, and death.¹

The COVID-19 pandemic means preventing influenza during 2020–21 is more important than ever. Influenza and COVID-19 share many symptoms. Preventing influenza means fewer people will need to seek medical care and testing for possible COVID-19 or influenza. And increasing flu vaccination uptake saves healthcare resources for COVID-19 and other conditions. Begin recommending flu vaccine now, and vaccinate throughout the flu season, providing extra outreach to those at highest risk of severe COVID-19 or severe influenza.



What are the Benefits of Seasonal Flu Vaccine?

- Research shows flu vaccination:**
- Reduces Hospitalization and Death
 - ✓ Pediatric deaths from flu were cut in half for children with underlying high-risk medical conditions and by two-thirds for healthy children²
 - ✓ Influenza hospitalizations were cut in half for all adults (including those 65+ years of age)³
 - ✓ Influenza hospitalizations dropped dramatically among people with chronic health conditions – by 70% for people with diabetes and 52% for those with chronic lung disease⁴
 - ✓ Vaccinating long-term care facility (LTCF) staff reduces hospitalizations and deaths in LTCF residents⁵
 - Reduces Severity of Illness in Hospitalized Individuals
 - ✓ Among adults hospitalized with flu, intensive care unit (ICU) admissions decreased by more than half (50%), and fewer days were spent in ICU if vaccinated⁶
 - ✓ Children's risk of admission to a pediatric intensive care unit (PICU) for flu-related illness was cut by almost 75%⁷
 - Reduces Risks for Major Cardiac Events
 - ✓ Risk of a major cardiac event (e.g., heart attack) among adults with existing cardiovascular disease was reduced by more than one-third⁸
 - Protects Pregnant Women and Their Babies
 - ✓ For pregnant women, flu-associated acute respiratory infections were cut in half⁹, and flu-associated hospitalizations were reduced by 40%¹⁰
 - ✓ Influenza illnesses and influenza-related hospitalizations in infants under 6 months of age fell by half when their mothers were vaccinated¹¹



How to Discuss Vaccine Effectiveness

- Keep it simple: Flu vaccine helps reduce risk of hospitalization and death.¹
- Use a conversational approach: "Today we are giving you your annual flu vaccine."
- Communicate why we vaccinate: "Vaccination prevents flu and lowers effectiveness of flu."¹ Preventing the flu also means preventing missed work and helps you avoid doctor appointments and unnecessary medications. It also means preventing flu symptoms that can mimic COVID-19, saving healthcare resources needed for COVID-19 care.¹
- Communicate the variability and unpredictability of flu: "This is why it is important to get your annual flu vaccination."¹
- Acknowledge that flu vaccination is not always a perfect match with the circulating virus types. But flu and flu-related severe illnesses are common outbreaks occur almost every year. It is the vaccine in the best way to reduce your risk of flu and its negative outcomes.¹

References:
1. CDC. Seasonal Influenza (Flu). Medical risks, hospitalizations, and deaths associated with influenza in the United States—United States, 2019–2020. <https://www.cdc.gov/media/releases/2020/s0915-flu-cdc.html>.
2. Thompson WW, et al. Influenza vaccination of children with chronic medical conditions. <https://doi.org/10.1093/pid/piaa001>.
3. Thompson WW, et al. Influenza vaccination of healthy working adults. <https://doi.org/10.1093/pid/piaa001>.
4. Thompson WW, et al. Influenza vaccination of adults with chronic medical conditions. <https://doi.org/10.1093/pid/piaa001>.
5. Thompson WW, et al. Influenza vaccination of long-term care facility staff. <https://doi.org/10.1093/pid/piaa001>.
6. Thompson WW, et al. Influenza vaccination of hospitalized adults. <https://doi.org/10.1093/pid/piaa001>.
7. Thompson WW, et al. Influenza vaccination of children in pediatric intensive care units. <https://doi.org/10.1093/pid/piaa001>.
8. Thompson WW, et al. Influenza vaccination of adults with cardiovascular disease. <https://doi.org/10.1093/pid/piaa001>.
9. Thompson WW, et al. Influenza vaccination of pregnant women. <https://doi.org/10.1093/pid/piaa001>.
10. Thompson WW, et al. Influenza vaccination of pregnant women. <https://doi.org/10.1093/pid/piaa001>.
11. Thompson WW, et al. Influenza vaccination of pregnant women. <https://doi.org/10.1093/pid/piaa001>.

FLU VACCINE: GET THE FACTS

YOUR BEST PROTECTION AGAINST FLU

he flu every year, hundreds of thousands of people are hospitalized and thousands or tens of thousands of people die.

Control and Prevention (CDC), public health professionals, and our practice recommend that everyone 6 months of age and older every year. The vaccination can reduce the illnesses, doctor visits, and missed work and school due to flu, as well as prevent serious flu complications in hospitalization and even death.¹ A flu vaccine is the best way to help prevent flu and its potentially serious complications. The not only protects you, but it also can help protect those around you.

FLU VACCINE REDUCES YOUR RISK OF FLU



FLU VACCINATION ESPECIALLY IMPORTANT FOR SOME

ally important for people who are at high risk of developing serious complications from flu, including children younger than 5, 65 and older, and people with certain chronic health conditions, such as diabetes, heart disease, and asthma.

PROVEN SAFETY RECORD

hundreds of millions of Americans have safely received seasonal flu vaccines and there has been extensive research supporting its safety. The vaccine is generally mild, especially when compared to symptoms of flu.⁵

office about getting a flu vaccine this fall. Our staff is ready to answer your questions.

Visit [WWW.CDC.GOV/FLU](https://www.cdc.gov/flu) for more information.



Twitter | Facebook | Instagram | Sample posts

CDC Frequently Asked Influenza (Flu) Questions: 2020-2021 Season

Q&A



If you would like to ask the presenter a question, please submit it through the questions box on your control panel.



If you are dialed in through your telephone and would like to verbally ask the presenter a question, use the “raise hand” icon on your control panel and your line will be unmuted.

Thank you!

- ❖ Jason Amirhadji, HRWG, Jason.Y.Amirhadji@hud.gov
 - ❖ Karen Ingvoldstad, HRWG, KIngvoldstad@hrsa.gov
 - ❖ Justin Mills, HRWG, Justin.Mills@ahrq.hhs.gov
 - ❖ Eric S. Halsey, HRWG, Ambulatory Team Lead, ycw8@cdc.gov
 - ❖ Darin Daly, HRWG, Ambulatory Team, Dep. Team Lead, DDaly@hrsa.gov
 - ❖ Judith Van Alstyne, BPHC, JVanAlstyne@hrsa.gov
 - ❖ Jill S Yu, HUD, Jill.S.Yu@hud.gov
 - ❖ Nathan S Bossie, HUD, Nathan.S.Bossie@hud.gov
 - ❖ David Wong, HHS/OS/OASH, David.Wong@hhs.gov
- Bob Burns, National Center for Health in Public Housing (NCHPH), bobburns@namgt.com
<https://nchph.org/>