



A New Normal: Learning to Live with COVID



April 13, 2022

ZOOM Housekeeping Instructions

- All participants will be muted when entering the platform
- Cameras on (if possible)
- Please participate in the chat
- Raise your hand if you want to connect to the audio/mic to participate
- Webinar is being recorded
- Presentation will be shared later with participants by E-mail





National Center for Health in Public Housing

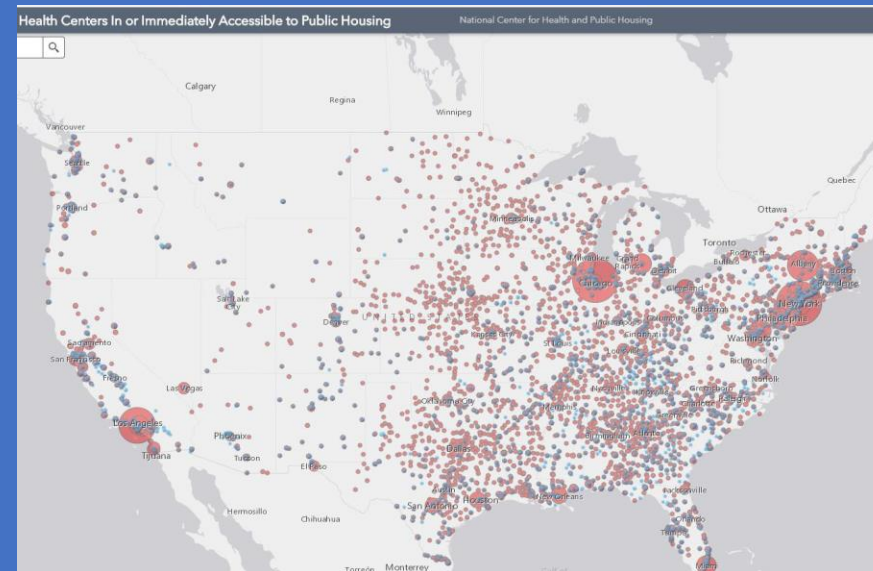
Strengthen the capacity of federally funded Public Housing Primary Care (PHPC) health centers and other health center grantees.

Training
and Technical
Assistance

Research and
Evaluation

Outreach and
Collaboration

info@nchph.org
www.nchph.org



- Webinars
- Monographs
- Provider and Resident-Centered Factsheets
- Interactive Maps
- Training Manuals
- Newsletters
- Collaboration Guides
- One-on-One Matching

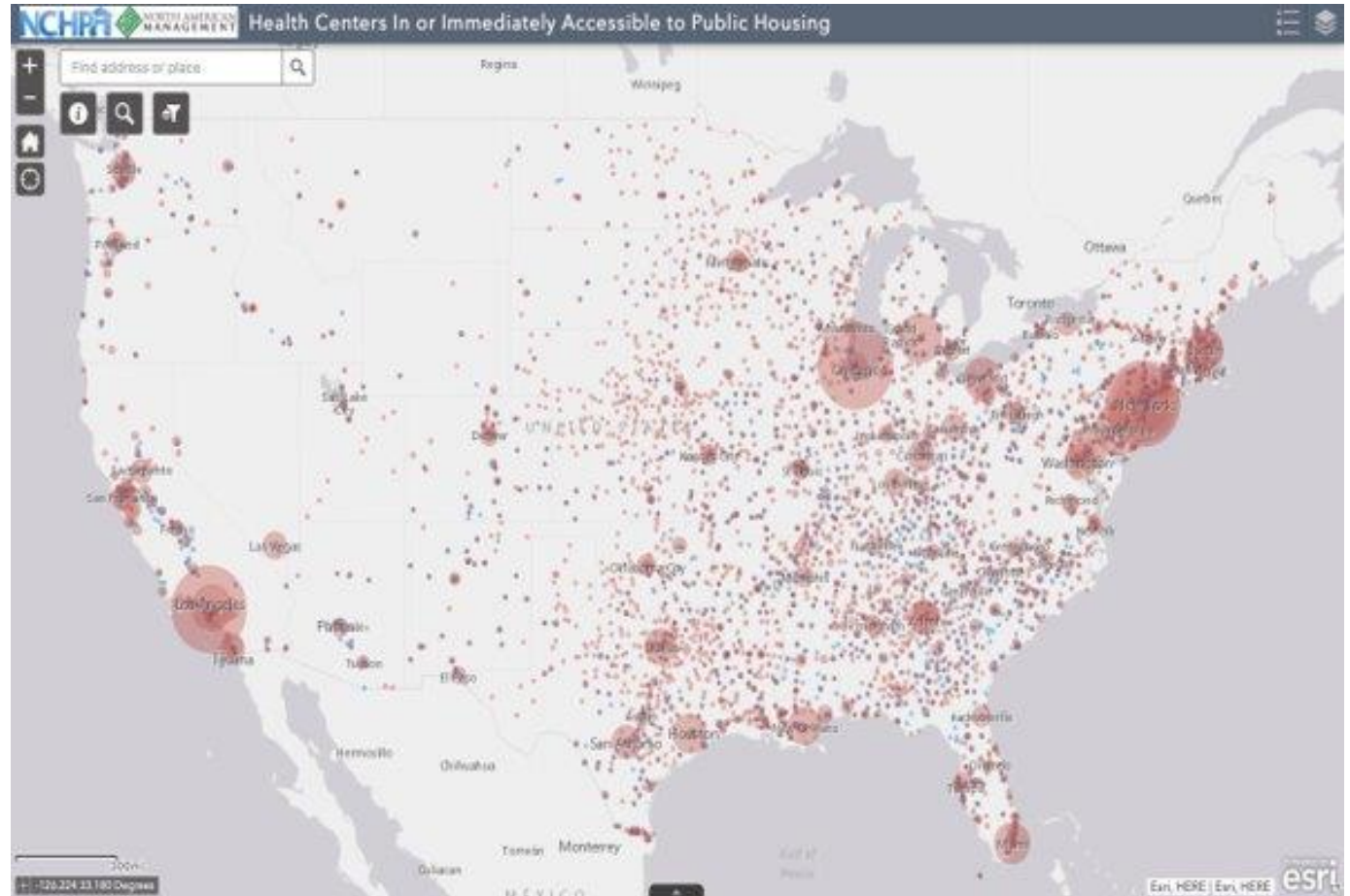
This webinar is supported by the Health Resources and Services Administration (HRSA) of the U.S. Department of Health and Human Services (HHS) as part of an award totaling \$684,000 with 0% financed with non-governmental sources. The contents are those of the author(s) and do not necessarily represent the official views of, nor an endorsement, by HRSA, HHS, or the U.S. Government. For more information, please visit HRSA.gov.

Agenda:

- Provide and overview of La Maestra
- List lessons learned from a historical perspective
- Examine what La Maestra Health Centers has done to adapt to an endemic COVID-19
- Discuss the future of virtual and onsite visits for La Maestra Community Health Centers
- List Strategies to maintain and improve primary health services during COVID

Health Centers Close to Public Housing

- 1,375 Federally Qualified Health Centers (FQHC) = 28.5 million patients
- 435 FQHCs In or Immediately Accessible to Public Housing = 5.1 million patients
- 107 Public Housing Primary Care (PHPC) = 866,851 patients
- Source: [2020 National Health Center Data](#)



Public Housing Demographics

Public Housing Demographics:



1.7 Million Residents



2.1 Persons Per Household



33% Female Headed Household w/Children



55% Less than High School Diploma



43% African-American



25% Hispanic



37% Children



52% White



35% Elderly



38% Disabled



93% Low Income

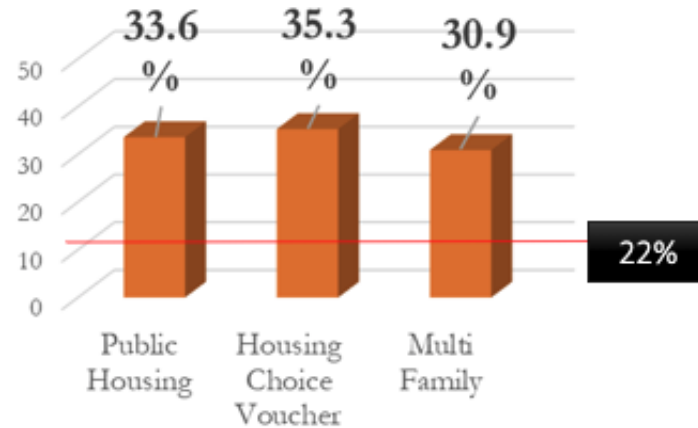
COVID-19 PHPC Data as of 03/25/2022

- **4.85%** Residents of Public Housing Fully Vaccinated (Patients Receiving 2nd Dose Through HC COVID-19 Vaccine Program)
 - **33 %** of HUD-Assisted Adults have reported 3 or more vaccines
- **19,740** PHPC Patients Tested
- **38 PHPCs** hosting mobile vans, pop-up, and/or school-based clinics
- **11 PHPCs** distributed N95 masks to residents of public housing and/or individuals experiencing homelessness

A Health Picture of HUD-Assisted Adults, 2006-2012

- Adults in HUD-assisted housing have higher rates of chronic health conditions and are greater utilizers of health care than the general population.

Adult Smokers with Housing Assistance



Source: Helms VE, 2017

	HUD-Assisted	Low-income renters	All Adults
Fair/Poor Health	35.8%	24%	13.8%
Overweight / Obese	71%	60%	64%
Disability	61%	42.8%	35.4%
Diabetes	17.6%	8.8%	9.5%
COPD	13.6%	8.4%	6.3%
Asthma	16.3%	13.5%	8.7%

Panelists



LA MAESTRA
COMMUNITY HEALTH CENTERS
City Heights · El Cajon · National City · Lemon Grove

- **Zara Marselian, PhD, President and CEO, La Maestra Health Centers**



La Maestra Overview

- Location
- Patient Characteristics
- Services

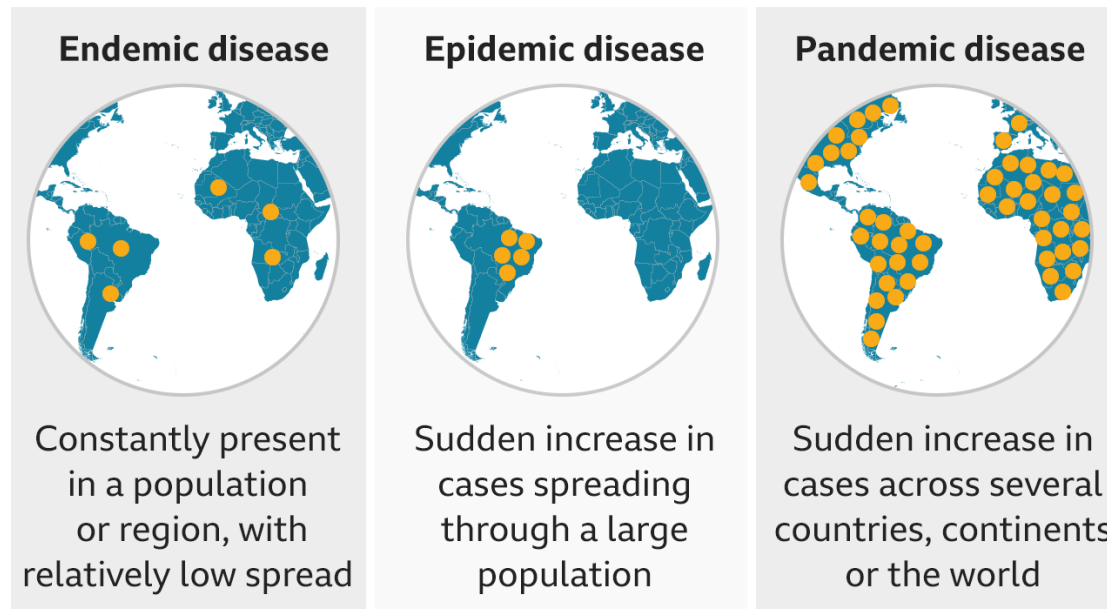


Lessons Learned from a Historical Perspective



What La Maestra has Done to Adapt to an Endemic COVID-19

What's the difference between an endemic, epidemic and pandemic disease?



Source: Wellcome

BBC

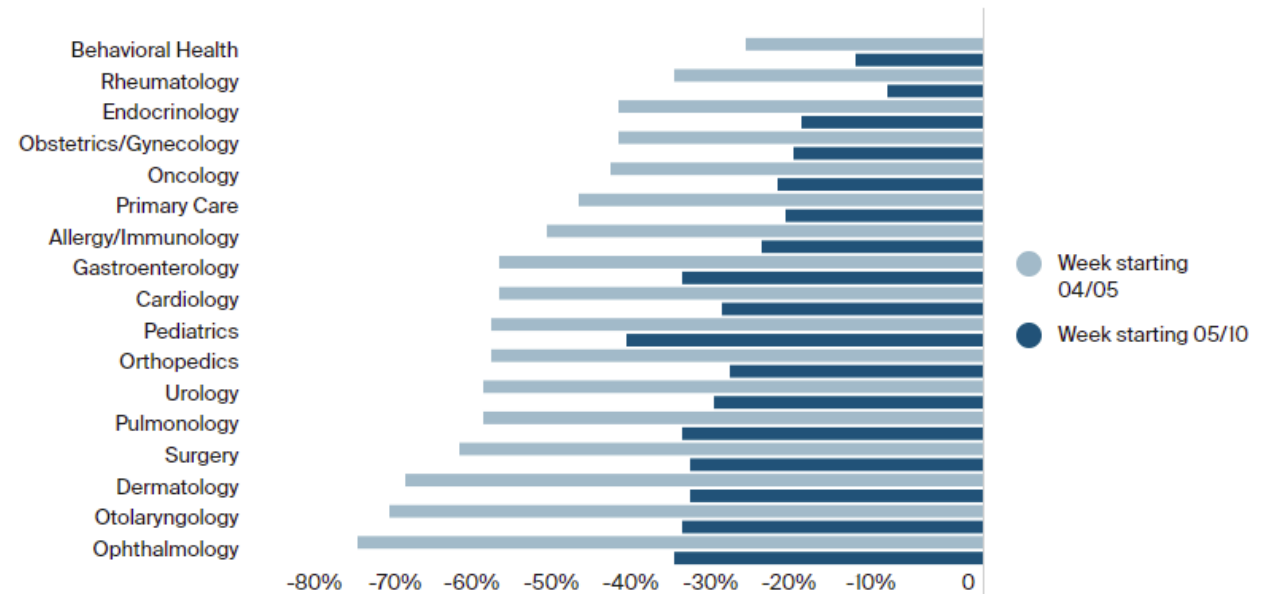
The Future of Virtual and Onsite Visits

1. Bringing healthcare to the people using telemedicine. Telemedicine is the remote diagnosis and treatment of patients by means of telecommunications technology. It can mitigate the costs, pain, and suffering due to chronic diseases and coming novel healthcare crises in the new century.
2. Developing cost-effective, miniaturized diagnostic and treatment technologies.
3. Using innovative, efficient skill and knowledge transfer techniques, including distance learning, computer-based instruction and simulation, and even video game technology, to shorten and improve the quality of training.

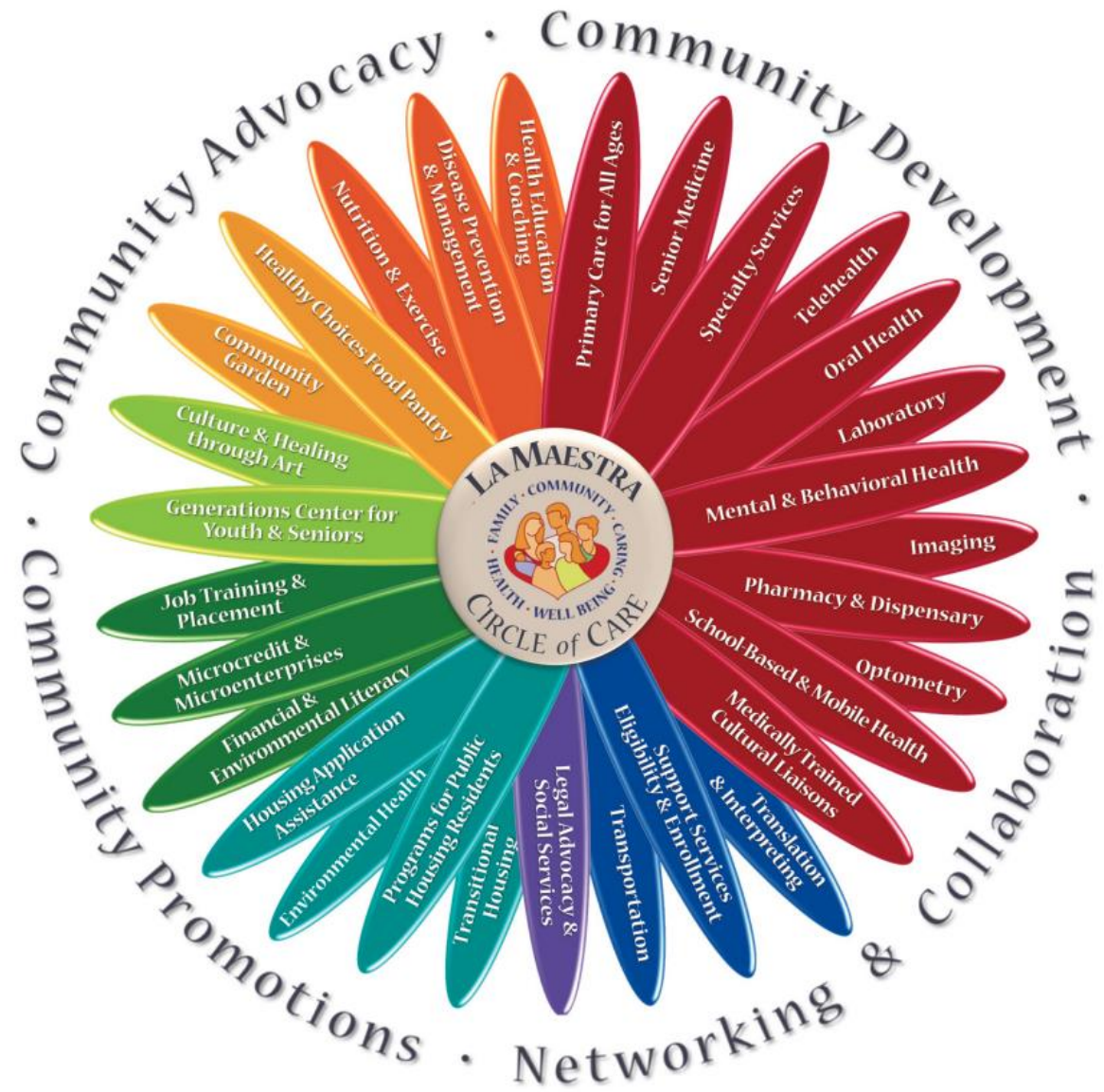
Strategies to Maintain and Improve Primary Health Services during COVID

- Protect your Workforce
- Protect your Patients
- Expansion of Telehealth Services
- Infection Control
- In-person Visits

Percent change in visits from baseline



La Maestra Circle of Care



Questions & Answers



Complete Post- Evaluation Survey



Contact Us

Robert Burns
Director of Health
Bobburns@namgt.com

Dr. Jose Leon
Chief Medical Officer
jose.leon@namgt.com

Saqi Maleque Cho DrPH,
MSPH
Manager of Policy, Research,
and Health Promotion
Saqi.cho@namgt.com

Fide Pineda Sandoval, CHES
Health Research Assistant
Fide@namgt.com

Chantel Moore
Communications Specialist
Cmoore@namgt.com

Please contact our team for
Training and Technical Support
703-812-8822

Thank you!

