



Acting on Climate Change for a Healthier Future: The Role of Health Centers

*Webinar 1*



# Housekeeping

- All participants muted upon entry
- Engage in chat
- Raise hand if you would like to unmute
- Meeting is being recorded
- Slides and recording link will be sent via email



# Learning Objectives – Webinar 1

- Examine the impact of climate change on vulnerable populations
- Discuss adaptation, planning, and resilience strategies
- Identify what health centers are doing to act against climate change and natural disasters



# National Center for Health in Public Housing (NCHPH)

- The National Center for Health in Public Housing (NCHPH) is supported by the Health Resources and Services Administration (HRSA) of the U.S. Department of Health and Human Services (HHS) under grant number U30CS09734, a National Training and Technical Assistance Partner (NTTAP) for \$668,000 and is 100% financed by this grant. This information or content and conclusions are those of the author and should not be construed as the official position or policy of, nor should any endorsements be inferred by HRSA, HHS or the U.S. Government.
- The mission of the National Center for Health in Public Housing (NCHPH) is to strengthen the capacity of federally funded Public Housing Primary Care (PHPC) health centers and other health center grantees by providing training and a range of technical assistance.



# National Nurse-Led Care Consortium

The **National Nurse-Led Care Consortium (NNCC)** is a membership organization that supports nurse-led care and nurses at the front lines of care.

NNCC provides expertise to support comprehensive, community-based primary care.

- Policy research and advocacy
- Technical assistance and education support
- Direct, nurse-led healthcare services



**NATIONAL  
NURSE-LED CARE  
CONSORTIUM**  
a PHMC affiliate

# Today's Guest Speakers



**Jose Leon, MD**  
Chief Medical Officer  
National Center for Health  
in Public Housing



**Gianna Van Winkle**  
Director, Emergency Management  
Programs  
Florida Association of Community Health  
Centers (FACHC)



**Jamie Barney, DSW, LCSW-BACS**  
Vice President of Behavioral Health  
Open Health Care Clinic



# NNCC NTTAP TEAM



Jillian Bird

Matt  
Beierschmitt

Fatima  
Smith

Junie  
Mertus

Director of  
Training and  
Technical  
Assistance

Senior Program  
Manager

Program  
Manager

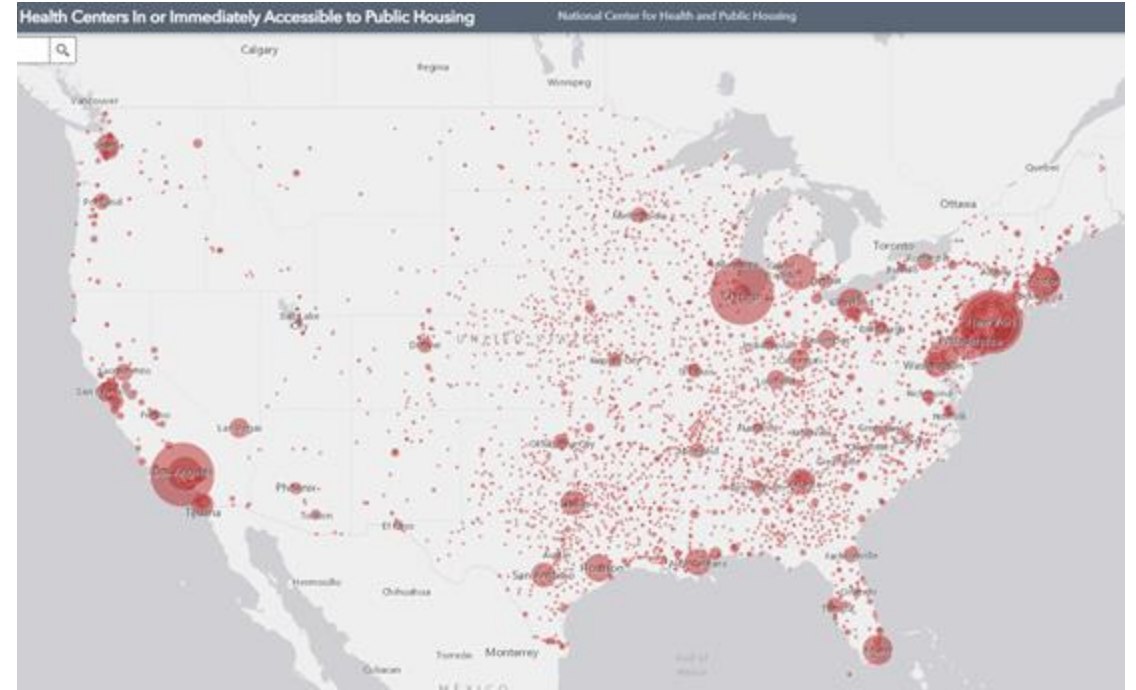
Program Intern



# Health Centers Close to Public Housing

- **1,370 Federally Qualified Health Centers (FQHC) = 30.5 million patients**
- **483 FQHCs In or Immediately Accessible to Public Housing = 6.1 million patients**
- **107 Public Housing Primary Care (PHPC) = 935,823 patients**

Source: [2022 Health Center Data](#)



Source: [Health Centers in or Immediately Accessible to Public Housing Map](#)



# Public Housing Demographics



1.5 Million Residents



2 Persons Per Household



38% Disabled



52% White



91% Low Income



43% African-American



26% Latinx



19% Elderly



36% Children



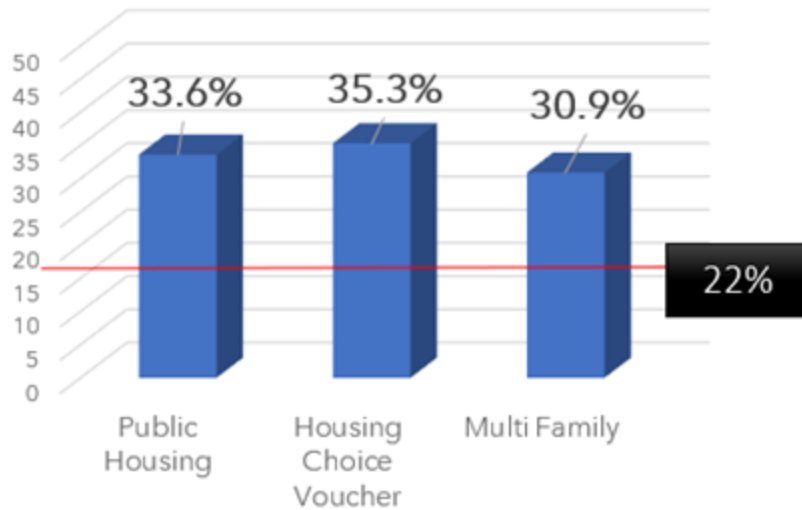
32% Female Headed Households with Children

Source: 2022 HUD Resident Characteristics Report

# A Health Picture of Hud-Assisted Adults (2006-2012)

Adults in HUD-assisted housing have higher rates of chronic health conditions and are greater utilizers of health care than the general population.

**Adult Smokers with Housing Assistance**



Source: Helms VE, 2017

	HUD-Assisted	Low-income renters	All Adults
Fair/Poor Health	35.8%	24%	13.8%
Overweight / Obese	71%	60%	64%
Disability	61%	42.8%	35.4%
Diabetes	17.6%	8.8%	9.5%
COPD	13.6%	8.4%	6.3%
Asthma	16.3%	13.5%	8.7%

Rising Temperatures

Cold Waves and Storms

Extreme Precipitations

Floods

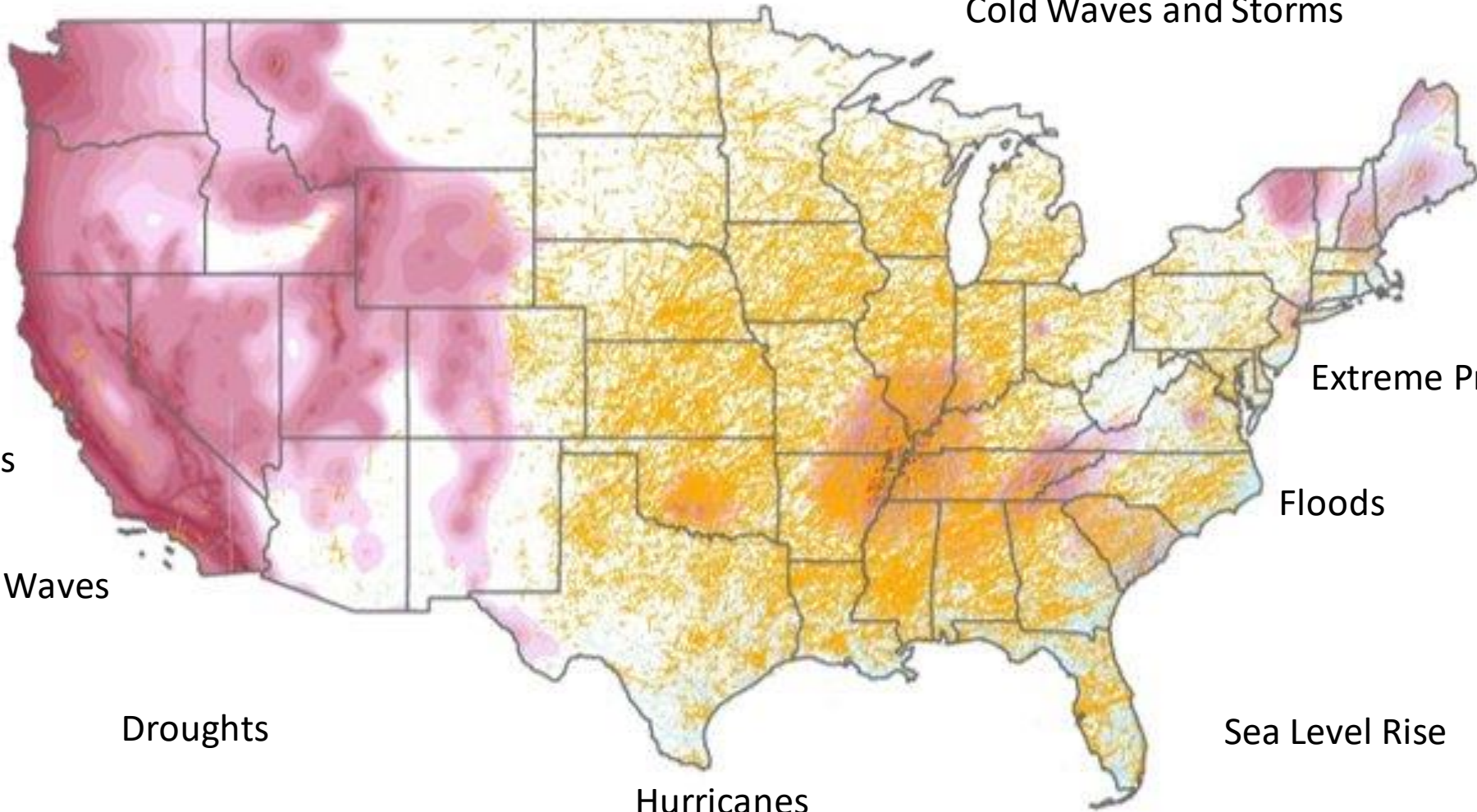
Sea Level Rise

Hurricanes

Droughts

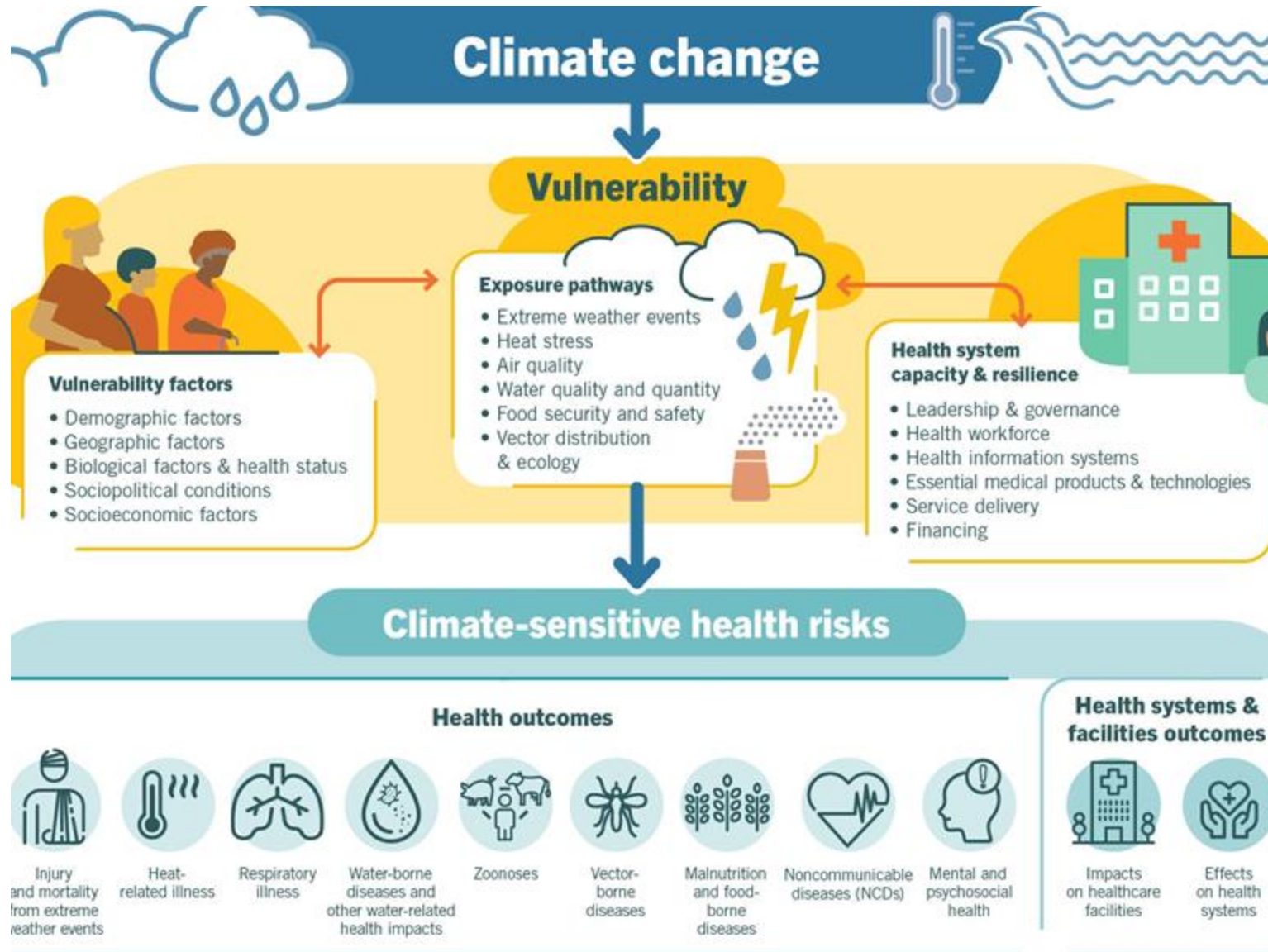
Heat Waves

Wild Fires



# Case Study

- **K.B. is a thirteen-year old patient with a three-year history of asthma. The patient's parents are concerned because K.B. wakes every night coughing. The family just moved to an apartment that does not have air conditioning and has received several code violations for a leaking roof and windows. The apartment is located next to two major interstate highways and is 10 miles from a cement factory. Air quality has reached the orange zone several times this month, and pollen levels have been consistently high for several months. I have provided the parent with an Asthma Action Plan and updated K.B.'s medications according to current guidelines. I believe that the environmental factors exacerbate or even cause my patient's condition, so how do I talk with the family about these issues over which they have little or no control? How do I talk with a patient about issues such as air pollution or climate change and their impacts on health?**



# Health and Heat

Acute Kidney Injury

Stroke

Adverse Pregnancy Outcomes

Worsened Sleep Patterns

Impacts on Mental Health

Worsening of Underlying Cardiovascular and Respiratory Conditions

# Adaptation, Planning and Resilience



- **Assessment and planning for health adaptation**
- **Climate information for health**
- **Heat adaptation strategies with sustainable low-energy cooling**

**eTABLE B****Additional Resources on Climate Counseling with Patients**

<b>Resource/program</b>	<b>Purpose</b>
Centers for Disease Control and Prevention <a href="https://www.cdc.gov/nceh/toolkits/extremeheat/default.html">https://www.cdc.gov/nceh/toolkits/extremeheat/default.html</a> <a href="https://ephtracking.cdc.gov/Applications/heatTracker/">https://ephtracking.cdc.gov/Applications/heatTracker/</a>	Suggests strategies and provides a geographic heat tracker to optimize protection against heat-related health risks
Community Action Partnership <a href="https://communityactionpartnership.com/">https://communityactionpartnership.com/</a>	Provides technical assistance, training, and other resources to Community Action Agencies; most Community Action Agencies staff can help with application forms for energy bill payments, heating and cooling needs, weatherization, and housing repairs
Low Income Home Energy Assistance Program <a href="https://www.LIHEAP.org">https://www.LIHEAP.org</a>	Provides resources, information, and links to organizations that support the Low Income Home Energy Assistance Program
Regional Asthma Management and Prevention <a href="http://www.rampasthma.org/">www.rampasthma.org/</a>	Aims to reduce the burden of asthma with a focus on health equity
U.S. Department of Housing and Urban Development <a href="https://www.hud.gov/program_offices/healthy_homes/hhi">https://www.hud.gov/program_offices/healthy_homes/hhi</a>	Initiative to protect children and families from housing-related health and safety hazards; may provide portable room air filters and dehumidifiers for basements and air-conditioning systems
U.S. Environmental Protection Agency <a href="https://www.epa.gov/indoor-air-quality-iaq">https://www.epa.gov/indoor-air-quality-iaq</a>	Provides comprehensive individual, local, and community strategies to address indoor air quality and climate change





**Gianna Van Winkle**

**Director, Emergency Management Programs**

**Florida Association of Community Health Centers (FACHC)**





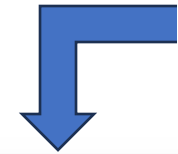
# **ACTING ON CLIMATE CHANGE FOR A HEALTHIER FUTURE: THE ROLE OF HEALTH CENTERS**

OCTOBER 18, 2023

GIANNA VAN WINKLE, FACHC DIRECTOR OF EMERGENCY MANAGEMENT PROGRAMS | [GIANNA@FACHC.ORG](mailto:GIANNA@FACHC.ORG)

# Health Center Emergency Management Requirements and Standards

- HRSA Program Expectations (PIN 2007-15)
- CMS Emergency Preparedness Rule (updated 2021)
  - Emergency Plan
  - Policies and Procedures
  - Communications
  - Training and Testing
  - Integrated Health Systems
- Joint Commission and AAAHC Standards
- State Requirements



## Rural Health Clinic / Federally Qualified Health Center Requirements CMS Emergency Preparedness Final Rule

Updates Effective March 26, 2021

The Centers for Medicare & Medicaid Services (CMS) issued the [Emergency Preparedness Requirements for Medicare and Medicaid Participating Providers and Suppliers Final Rule](#) to establish consistent emergency preparedness requirements for healthcare providers participating in Medicare and Medicaid, increase patient safety during emergencies, and establish a more coordinated response to natural and human-caused disasters. The U.S. Department of Health and Human Services Office of the Assistant Secretary for Preparedness and Response (ASPR) worked closely with CMS in the development of the rule.

This document combines excerpts from the Final Rule and Interpretive Guidelines (as updated 3.6.19, 11.8.19, and 3.26.21) from CMS to provide a consolidated overview document for the Rural Health Clinic/Federally Qualified Health Center (RHC/FQHC) Requirements. This document reflects final language as of the most recent Final Rule updates and Interpretive Guidance updates as of March 26, 2021. For a comparison of changes between past versions, please review the [Interpretive Guidelines published by CMS on March 26, 2021](#).

# Climate Implications on Emergency Management

The changing climate is a force multiplier – increasing the number of storms, floods, fires, and extreme temperatures that threaten the well-being of people across our nation.

When emergency managers plan for and strategically invest in climate adaptation measures, the effects from disasters are less severe and the road to recovery starts sooner...

Source: <https://www.fema.gov/fact-sheet/fema-and-changing-climate>

CLIMATE

## The Crucial Factor in Planning for Community Disasters: Climate Change

New federal guidelines make it clear that new hazard mitigation plans should factor in the likelihood of extreme weather events. Here are four recommendations for preparing for the future impacts.



EXPLAINS SCIENCE

### Climate change is already making parts of America uninsurable

"We're steadily marching toward an uninsurable future."  
By Omar White | Updated Jun 5, 2023, 12:05pm EDT

## A Record Number of Billion-Dollar Disasters Show U.S. Isn't Ready for Climate Change

The U.S. has already seen a record number of disasters costing at least \$1 billion in 2023, which underscores how unprepared the nation is to withstand climate-driven catastrophe

# Climate & Equity

*Equity: The consistent and systematic fair, just, and impartial treatment of all individuals.*

Historically, underserved and marginalized communities are particularly vulnerable to the effects of climate change and can be disproportionately harmed by disasters.

Source: <https://www.fema.gov/fact-sheet/fema-and-changing-climate>

# Climate Related Policy

- [Biden Administration National Climate Task Force](#)
  - [Inflation Reduction Act](#)
  - [Bipartisan Infrastructure Law](#)
- [US Congress Ways & Means Committee: HEALTH CARE AND THE CLIMATE CRISIS: PREPARING AMERICA'S HEALTH CARE INFRASTRUCTURE](#)
  - 26 Health Centers provided a response to the 2022 RFI
  - Key Takeaways: [Extreme weather events & risk + Carbon footprint](#)

# Climate Related Policy & Guidance (FEMA)

- FEMA Hazard Mitigation Guide Now Explicitly Addresses Key FEMA Priorities like Climate Change and Equity ([as of March 2023](#))
  - Hazard Mitigation Assistance Program
  - Building Resilient Infrastructure and Communities (BRIC)

# STATE CLIMATE SUMMARIES

The State Climate Summaries provided here were initially produced to meet the demand for state-level climate information in the wake of the Third U.S. National Climate Assessment. This 2022 version provides new information and extends the historical climate record to 2020 for each state. The summaries cover assessment topics directly related to NOAA's mission, specifically historical climate variations and trends, future climate model projections of climate conditions during the 21st century, and past and future conditions of sea level and coastal flooding. Additional background information and links are given below.





# National Risk & Social Vulnerability Indices

- The National Risk Index is a dataset and online tool to help illustrate the United States communities most at risk for 18 natural hazards. It was designed and built by FEMA in close collaboration with various stakeholders and partners in academia; local, state and federal government; and private industry.

$$\text{Expected Annual Loss} \times \text{Social Vulnerability} \div \text{Community Resilience} = \text{Risk Index}$$

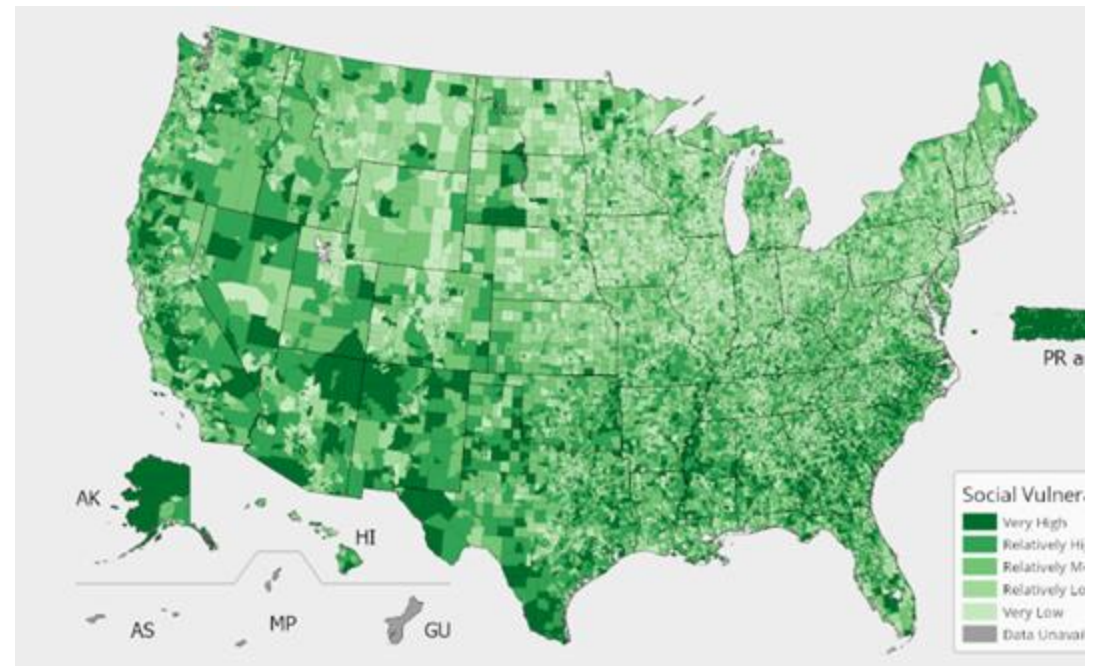
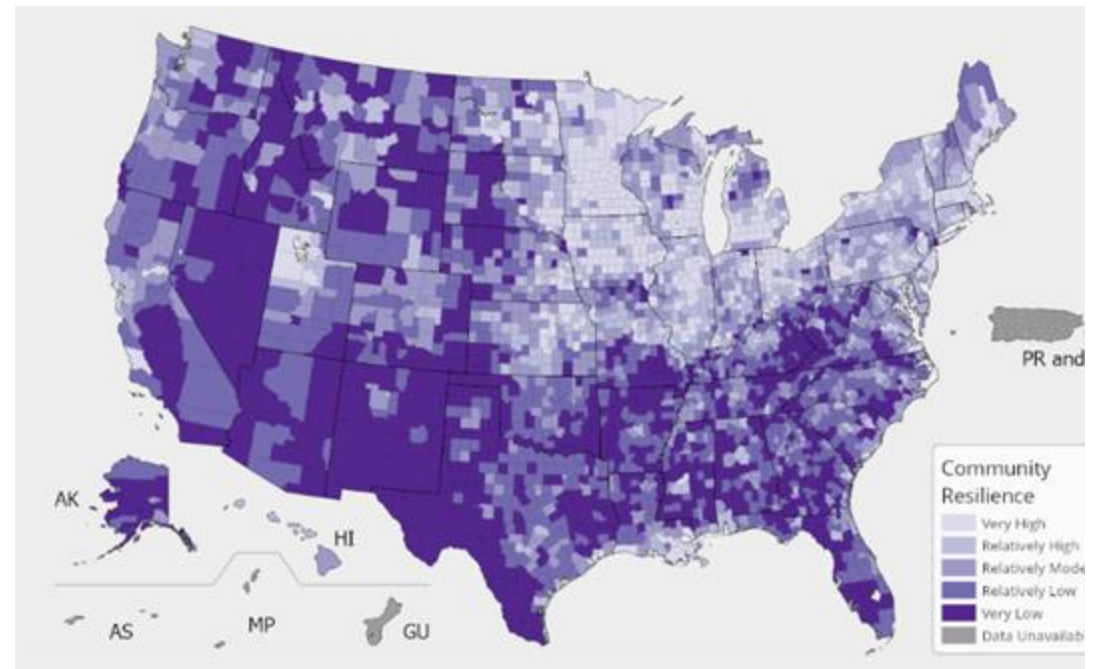
- Social vulnerability refers to the potential negative effects on communities caused by external stresses on human health. Such stresses include natural or human-caused disasters, or disease outbreaks.

More Information:

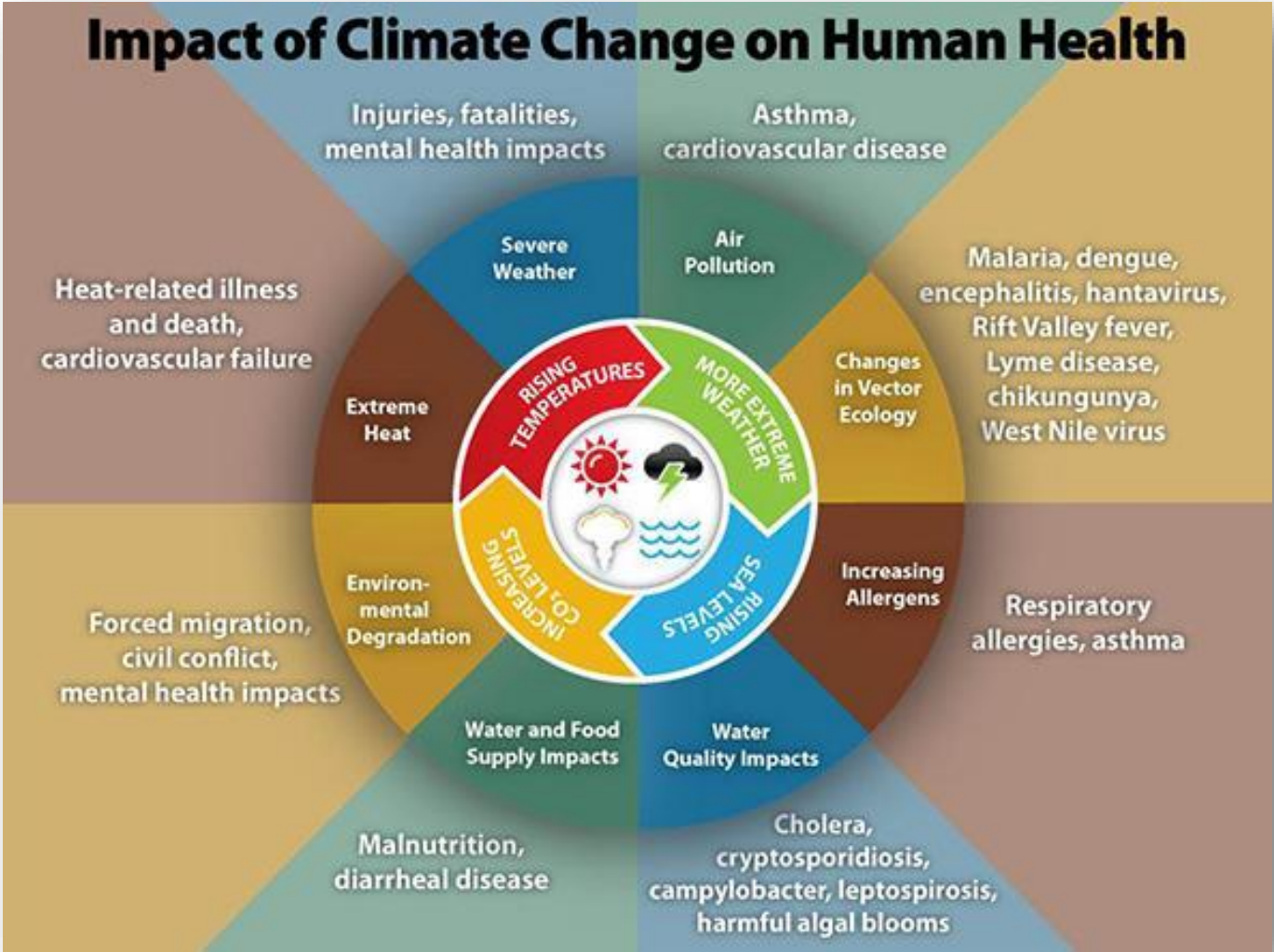
<https://hazards.fema.gov/nri/community-resilience>

<https://hazards.fema.gov/nri/social-vulnerability>

<https://www.atsdr.cdc.gov/placeandhealth/svi/index.html>



# Health Factors & Community Resilience Strategies



# Physical Resilience Strategies

- Facility Improvements
  - Installation of renewable energy / backup generator systems
  - Installation of water catchment and purification systems
  - Installation of secondary/backup data connections
  - Installation/procurement of backup cooling and heating systems
  - Installation of windows that can be opened, insulation of walls and pipes
- Flood Resilience & Prevention
  - Installation of flood-proof and/or decentralized wastewater treatment
  - Elevating Critical Equipment
  - Dry/Wet Floodproofing
  - Installation of flood-proof Electricity, Water, and Data Infrastructure
  - Flood Small Scale Ring Walls
  - Deployable flood control
  - Drainage, rain infiltration, and stormwater retention improvements
  - Elevating and/or Relocating Structures



## Supporting Access to Health Care

### Resilient Emergency Power for Florida Community Health Centers

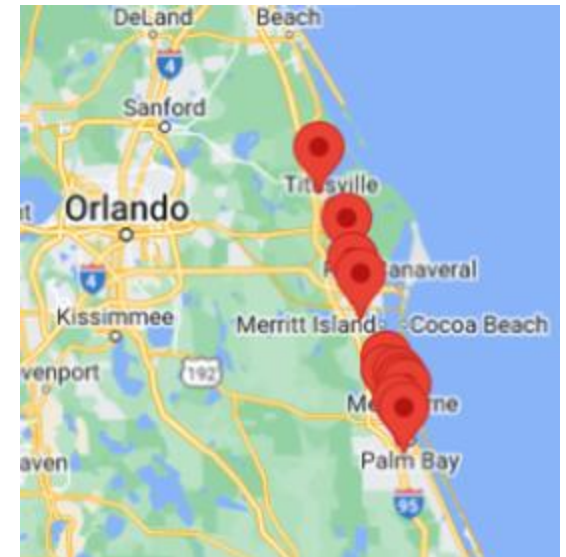
MAY 2023



# Health Center Perspective

- **Disaster Preparedness Plans:** Develop comprehensive disaster preparedness plans that outline specific procedures and responsibilities for staff during different types of disasters. These plans should be regularly updated and practiced through drills and simulations.
- **Community Engagement/outreach/education:** Foster community engagement and education by conducting workshops, seminars, and outreach programs to inform the public about disaster preparedness and response. This can include information on evacuation routes, emergency contacts, and available services. Offer programs to help individuals and families develop personal disaster preparedness plans, emphasizing the importance of having emergency kits and knowing evacuation routes
- **Risk Assessment:** Collaborate with local authorities and agencies to assess the specific risks associated with climate change-related disasters in the region. Understanding the unique vulnerabilities of the community can help tailor preparedness plans accordingly.

BrevardHEALTH Alliance™



# Health Center Perspective

- **Infrastructure Resilience:** Ensure the resilience of the health center's infrastructure. This may involve reinforcing buildings, securing medical equipment, and establishing backup power sources to guarantee continuous service during disasters.
- **Resource Stockpiling:** Stockpile essential medical supplies, medications, and personal protective equipment (PPE) to sustain healthcare operations during and after disasters when supply chains may be disrupted.
- **Emergency Response Teams:** Train and designate specific emergency response teams within the health center to manage patient care, triage, and logistics during disasters.
- **Telemedicine and Telehealth:** Develop telemedicine capabilities to provide remote healthcare services during disasters when physical access to the health center may be limited.

# Health Center Perspective

- **Collaboration:** Establish partnerships with local emergency response agencies, hospitals, and other healthcare providers to ensure a coordinated response to disasters. Sharing resources and information can be critical in times of crisis.
- **Mental Health Support:** Recognize the psychological impact of disasters on patients and staff. Provide training for staff to offer psychological first aid and ensure access to mental health services for both patients and employees.
- **Early Warning Systems:** Stay updated with weather and climate information to anticipate and respond to disasters promptly. Implement systems that can alert patients and staff in advance.
- **Alternative Care Sites:** Identify and prepare alternative care sites that can be activated in the event the health center becomes inoperable due to a disaster.

# Health Center Perspective

- **Crisis Communication:** Develop communication plan to ensure that accurate information is disseminated to the public and patients quickly, through various channels, including social media, local news, and community outreach.
- **Regular Drills and Training:** Continuously train staff through regular drills and exercises to ensure that everyone is familiar with their roles and responsibilities during a disaster.

Thanks to  
Joseph Perno, Director of Business Operations  
BrevardHEALTHAlliance™

# What we CAN do NOW

- Recognize that people DO care. 76% of Americans said they would support climate solutions that protect personal and public health.
- Assess opportunity for your Health Center to implement Community and Physical Resilience strategies including those that reduce the organization's carbon footprint.
- **Advocate for our communities. Health professionals are, as a group, some of the most highly trusted and ethical professions in the country; our advocacy makes a difference.**



# Tools and Resources

- [NACHC Environmental Health & Climate Change Resources](#)
- [EcoAmerica 5 Steps for Climate Communication](#)
- [Americares Climate Resilience for Frontline Clinics Toolkit](#)
- [Health Care Climate Council - Playbook for Hospitals](#)
- [CDC's Building Resilience Against Climate Effects \(BRACE\) Framework](#)
- [U.S. Climate Resilience Toolkit](#)





**Acting on Climate Change  
for a Healthier Future: The  
Role of Health Centers**

# Introduction

## Speaker Bio

Dr. Jamie Barney is the Vice President of Behavioral Health at Open Health Care Clinic. In her current role, she oversees the provision of services in the case management, housing, and behavioral health departments.

Dr. Barney is the Vice Chair of the Louisiana State Board of Social Work Examiners. She also remains an active member in the Greater Baton Rouge Area Chapter of the Association of Black Social Workers.

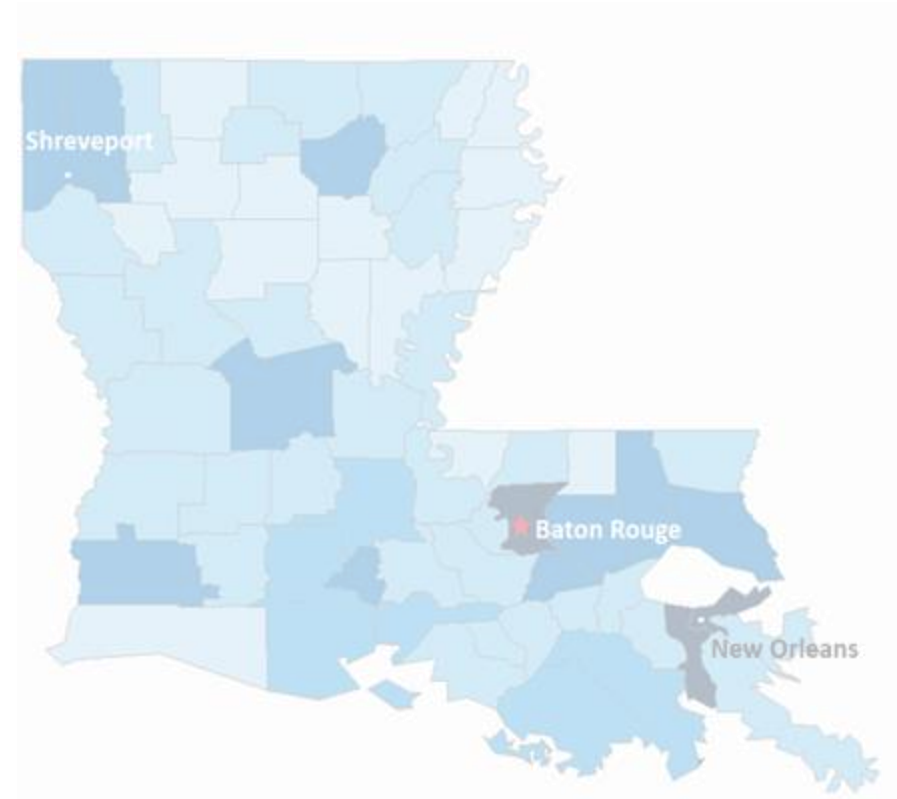
Dr. Barney's interests include efforts to improve services to persons living with HIV and combatting the HIV pandemic, ending homelessness, reducing stigma surrounding mental health and substance use disorder, and securing resources to address community needs.

**Jamie Barney, DSW, LCSW-BACS**  
**[Jamie.Barney@ohcc.org](mailto:Jamie.Barney@ohcc.org)**



# HIV/AIDS Alliance for Region Two (HAART), Inc dba Open Health Care Clinic (OHCC)

- Established in 1995
- Housing programs 2001
- Full service medical clinic 2007
- FQHC Status in 2015



**Whole Care for the Whole Community**

# Our Services

PRIMARY CARE

PEDIATRICS

WOMEN'S  
HEALTH

ENDOCRINOLOG  
Y

PODIATRY



SEXUAL HEALTH

PHARMACY

DENTAL

BEHAVIORAL  
HEALTH

SOCIAL SERVICES

# LOCATIONS



**HAART Clinic**  
Sexual Health  
Primary Care  
Ryan White  
Housing  
Revenue Cycle  
Performance Analytics



**Administration**  
Leadership  
Human Resources  
Marketing



**Mid City Clinic**  
Behavioral Health  
Primary Care

# LOCATIONS



**Denham Clinic**  
Primary Care  
Pediatrics  
Behavioral Health



**Colonial Clinic**  
Pediatrics  
Women's Health



**Mobile Unit #1**  
Primary Care  
HIV/STI Testing

# LOCATIONS



Baranco YMCA Clinic

Primary Care  
Behavioral Health



Dental Clinic



9516 Airline Hwy

Accounting  
HIP  
Facilities  
Central Supply  
Primary Care  
Behavioral Health



One Stop

Dental



# OUR IMPACT

## UNIQUE PATIENTS



## PATIENT VISITS





- HURRICANE KATRINA – 2005
- HURRICANE GUSTAV - 2008
- HURRICANE ISAAC – 2012
- GREAT FLOOD OF 2016
- HURRICANE HARVEY – 2017
- SNOW/FREEZE - 2017
- HURRICANE LAURA - 2020
- HURRICANE IDA – 2021
- TROPICAL DEPRESSION NINE – 2021
- RECORD BREAKING HEAT – 2022, 2023





---

Chronic conditions i.e. PLWH

---

Persons experiencing homelessness

---

Persons with mental health disorders

---

Persons with no/low income

---

Spanish speaking

## Vulnerable Subpopulations

# Prepare/Communicate/Respond



**Emergency  
Management  
Team**

**Technology**

**Response Time**

**Remain Updated  
& Follow Guidance**

**Education to  
Clients &  
Community**

**Staff  
Communication**

**Support Staff's  
Mental Well-being**

**Continuous  
Service Provision:  
Virtual Service &  
Skeleton Crew**

**Awareness of  
Additional  
Resources**

# Prepare

- Emergency Management Team
  - Identify Roles & Duties
- Tabletop Exercises
- Plan changes in operations
  - Pharmacy
  - Housing
  - Medical
  - Behavioral Health
- Messaging to vulnerable populations: ex: PLWH/PrEP
  - Medication Management
  - Case management
  - Copy of labs/list of meds
  - Evacuation plan
  - Important numbers cm, lahap
  - 511 - DOT
- Identify shelter & how to get help



## Patients

- EMR: Athena
  - Calls, texts, emails
- Social media
- Signage at all locations

## Community Partners/Funders

- Patient needs
- Changes in processes
- Exceptions/Allowances
- Identify Additional



## SNAP BENEFITS

During Stay At Home Order



**What is Supplemental Nutrition Assistance Program (SNAP)?** SNAP is a federal program that helps millions of low-income Americans put food on the table.



**What are supplement SNAP benefits?** Additional benefits to SNAP households to bring them up to their maximum monthly allotment for a household their size.



**Is anyone eligible for SNAP?** No. All applicants - even those who had hours cut because of COVID-19 - must meet strict federal SNAP eligibility guidelines including income.

**What if I can't get enough work hours for SNAP requirements because of COVID-19?** During the crisis, there are no time limits for work hours starting on April 1st.



## Staff

- textHR
- Email
- 3cx app

# Communicat e

TELEVISITS AVAILABLE.  
*Get Connected.*



OPENHEALTH  
CARE CLINIC

225-655-6422 | [ohcc.org/televisit](https://ohcc.org/televisit)

OPENHEALTH  
CARE CLINIC

# Respond

Minimize closures

- Telehealth
- Mobile Unit
- Skeleton crew
  - Medical
  - Behavioral Health
  - Dental
  - Pharmacy
- Backup medications
- On Call Provider
- Resources (Basic Needs)
- Contact Clients & Staff



**Keep Cool in Extreme Heat.**

Extreme heat can be dangerous for everyone, but it may be especially dangerous for people with chronic medical conditions.

Visit [ohcc.org/primarycare](https://ohcc.org/primarycare) to obtain more information on our primary care services.





# Cool Down Day at One Stop Homeless Service Center

Mobile Unit

Cool Down Station

- Cooling Towels
- Water Bottles
- Water & Ice
- Shade

Care Kits

BH Services/Resources

HIV/STI Testing



## Q&A

**If you would like to ask the presenter a question, please submit it through the chat box on your control panel or use the “raise hand” icon in the reactions tab and your line will be unmuted.**



Visit Us at [NCHPH.org](https://www.nchph.org)



#### About

The National Center for Health in Public Housing (NCHPH), a project of North American Management, is supported in part by a cooperative agreement grant awarded by the U.S. Department of Health and Human Services, Health Resources and Services Administration (HRSA). To learn more about NCHPH, click here. To view our public housing demographics fact sheet, click here. HRSA is the Health Resources and Services Administration (HRSA), The Health Resources and Services Administration (HRSA), an agency of the U.S. Department of Health and Human Services, is the primary Federal agency for improving access to health care services for people who are underserved, isolated or medically vulnerable. Highlighting the business and ten offices, HRSA provides leadership and financial support to health care providers in every state and U.S. territory. HRSA grantees provide health care to underserved...

PHPC COVID-19  
Weekly Updates

Webinars

Toolkits

Publications

Interactive Maps

Provider and  
Resident-Centered  
Factsheets

Training Manuals

Blogs

Join Our Mailing List at [NCHPH.org/contact](https://www.nchph.org/contact) and Receive:



HRSA  
Updates



Medicare  
Updates



Senior  
Programs



Resources  
and Services



T/TA  
Notifications


# Contact Us

<p><b>Robert Burns</b> Program Director Bobburns@namgt.com</p>	<p><b>Jose Leon, M.D.</b> Manager of Clinical Quality jose.leon@namgt.com</p>
<p><b>Kevin Lombardi, M.D., M.P.H.</b> Manager of Policy, Research, and Health Promotion Kevin@namgt.com</p>	<p><b>Fide Pineda Sandoval, C.H.E.S.</b> Training and Technical Assistance Manager Fide@namgt.com</p>
<p><b>Chantel Moore, M.A.</b> Manager of Communications Cmoore@namgt.com</p>	<p>Please contact our team for Training and Technical Support 703-812-8822</p>

# Thank you!





  
**Acting on Climate Change for a Healthier Future: The role of Health Centers**  
Hosted by the National Nurse-led Care Consortium and the National Center for Health in Public Housing.

**Training Name**  
Acting on Climate Change for a Healthier Future: The role of Health Centers

**Training Type**  
Select or enter value

**Session Number**  
Select or enter value

**Organization Type**  
Select or enter value

# Evaluation Survey