

# Health Centers Interventions Against Re-emerging Infectious Diseases - Webinar

National Center for Health in Public Housing



# National Center for Health in Public Housing

- This webinar is supported by the Health Resources and Services Administration (HRSA) of the U.S. Department of Health and Human Services (HHS) as part of an award totaling \$668,800 with 0% financed with non-governmental sources. The contents are those of the author(s) and do not necessarily represent the official views of, nor an endorsement, by HRSA, HHS, or the U.S. Government. For more information, please visit [HRSA.gov](https://www.hrsa.gov).
- The mission of the National Center for Health in Public Housing (NCHPH) is to strengthen the capacity of federally funded Public Housing Primary Care (PHPC) health centers and other health center grantees by providing training and a range of technical assistance.



# Speakers and Moderators



**Kevin Lombardi MD, MPH**  
Manager of Policy,  
Research and Health  
Promotion



**Olajumoke Oladipo, MPH**  
Health Communications and  
Research Analyst

# Housekeeping

- All participants muted upon entry
- Engage in chat
- Raise hand if you would like to unmute
- Meeting is being recorded
- Slides and recording link will be sent via email



Video Conference via

**zoom**

# *Managing and preventing emerging infections in the Health Center context*

*Dr. Kevin Michael Lombardi MD, MPH*

*Manager of Policy, Research and Health Promotion  
The National Center for Health in Public Housing  
North American Management*





**Literature Review**



**Clinical case review**



**Epidemiology**



**Discussion**



**Findings and  
recommendations**

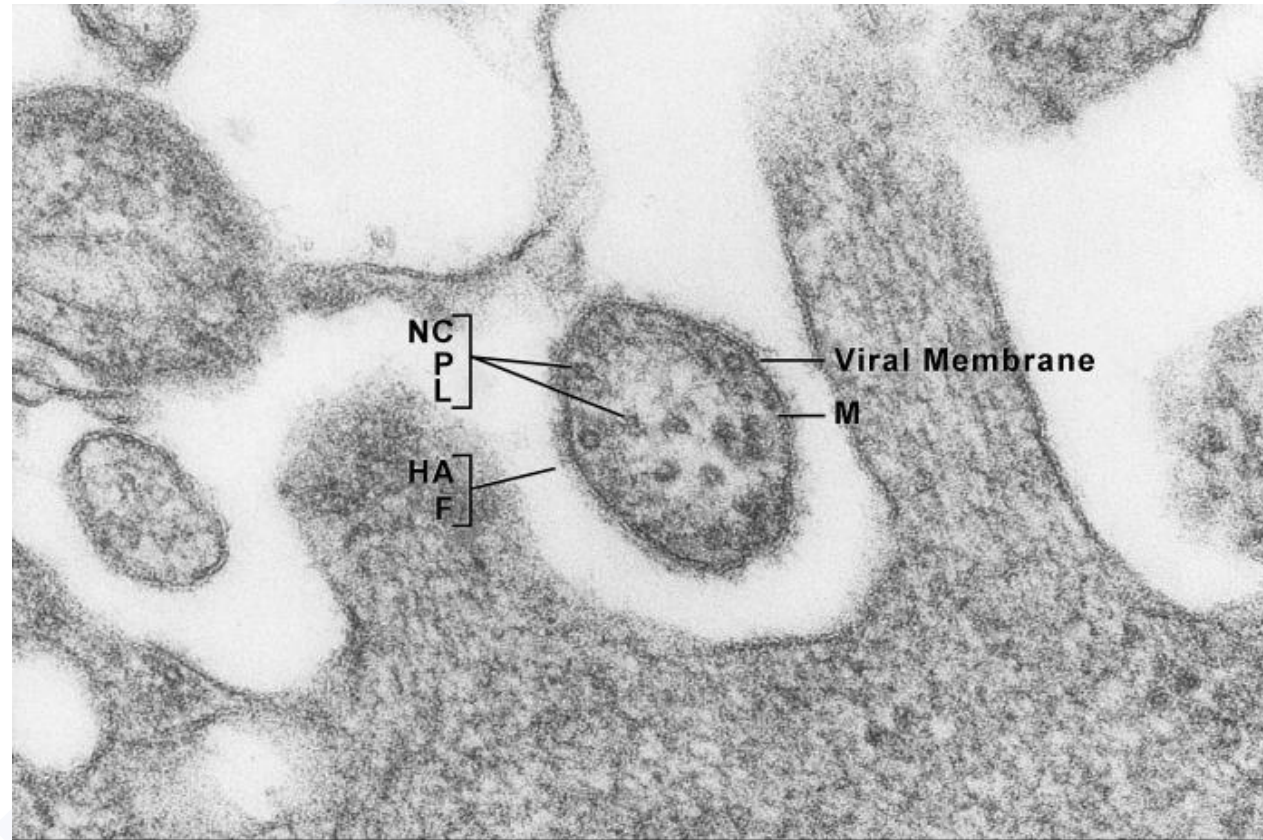


**Implementation and  
advising**





# *Staphylococcus aureus*

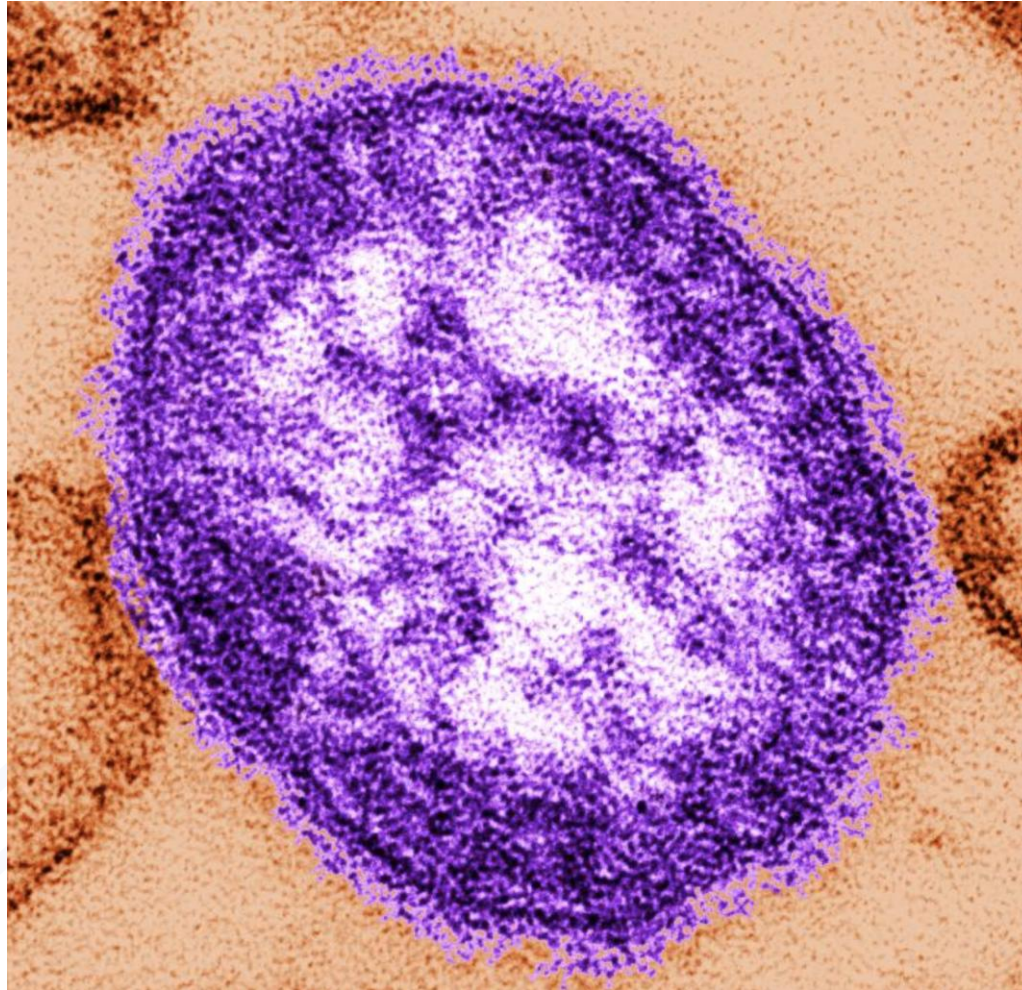


NC = Nucleocapsid; P = Phosphoprotein; L = Large protein;  
HA = Hemagglutinin; F = Fusion protein; M = Matrix protein

Link to source: [CDC Public health image library](#)



# *Morbillivirus hominis / Measles*



Link to source: [CDC Public health image library](#)





# *Morbillivirus hominis / Measles*



Link to source: [CDC Public health image library](https://www.cdc.gov/publichealthlibrary/)



# *Morbillivirus hominis / Measles*



Link to source: [CDC Public health image library](#)



# *Morbillivirus hominis / Measles*



Link to source: [CDC Public health image library](https://www.cdc.gov/publichealthlibrary/)





# *Morbillivirus hominis / Measles*



Link to source: [CDC Public health image library](#)





## *Morbillivirus hominis / Measles*

*A 12-year-old patient is seen by a mental health professional in the home visit setting. The staff member discovers the patient was recently exposed to another child with an active measles infection.*

**What is the staff member's next step?**



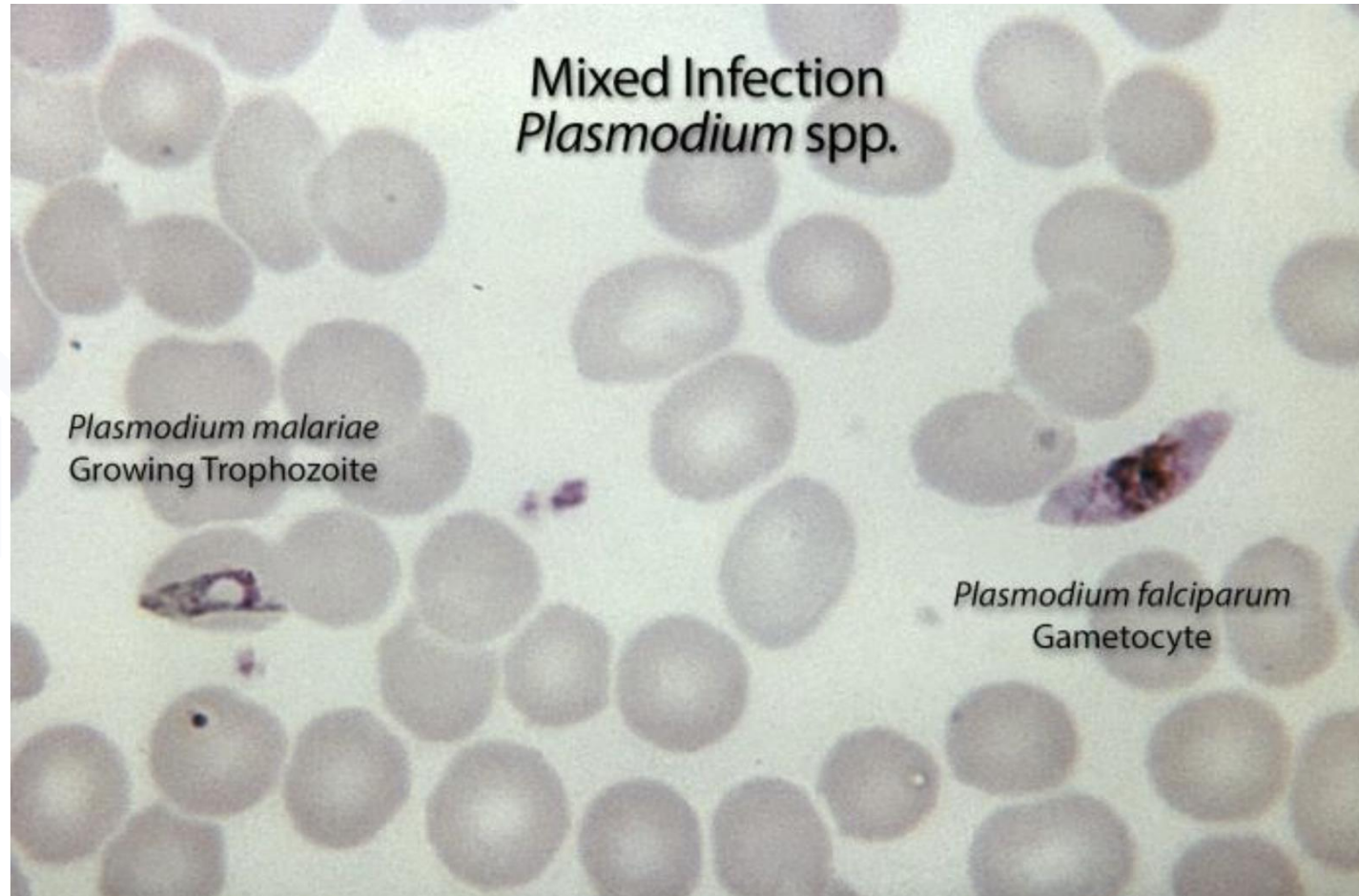
# *Plasmodium falciparum / Malaria*



Link to source: [CDC Public health image library](#)



# *Plasmodium falciparum* / Malaria



Link to source: [CDC Public health image library](#)



# *Plasmodium falciparum / Malaria*

## Medication Adherence



*Your patient is experiencing **severe fevers and chills** in the context of **9/10 joint** and **4/10 abdominall pain**. The patient recently returned from a **vacation in the Dominican Republic**. You know no other information about the patient. Your EHR notes the patient **did not fill** their prophylaxis prescription prior to their departure.*

1. What is your next question for the patient?
2. What is your next step as a clinical provider?





# Antibiotic-Resistant Bacterial Infections



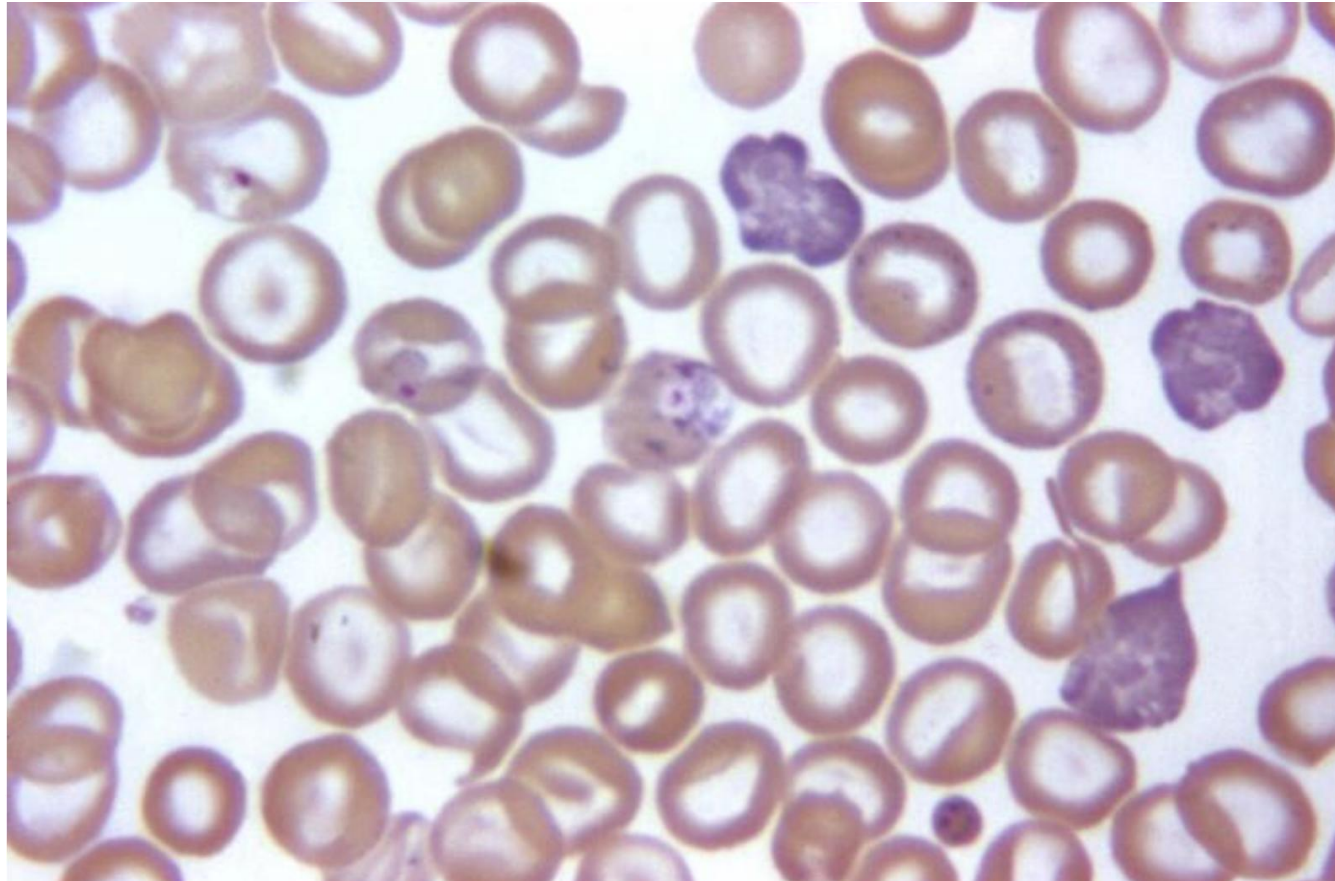
## Key Issues:

- More than 2.8 million antimicrobial-resistant infections occur in the U.S. each year.
- More than 35,000 people die as a result.
- When *C. diff* is added to these, the U.S. toll of all the threats in the report exceeds 3 million infections and 48,000 deaths.

Link to source: [CDC Public health image library](#)



## *ARI: Staphylococcus aureus*



Link to source: [CDC Public health image library](#)



## *ARI: Clostridium difficile / C-diff*



Link to source: [CDC Public health image library](#)



## *Plasmodium falciparum / Malaria*



*You are an intake nurse in a primary care clinic. You are performing a patient's assessment and find that they were recently discharged from the hospital for a respiratory infection. According to the hospital H&P the patient was on contact precautions for C-diff throughout their hospital stay.*

- 1. What is your next step?**
- 2. How could the intake have been performed to prevent exposure?**



# Q & A Session



# Complete Our Post Evaluation Survey



# Visit our Website at [NCHPH.org](https://NCHPH.org)

- Access our latest publications, webinars, learning collaboratives and more!



# Contact Us

**Robert Burns**

Program Director

Bobburns@namgt.com

**Jose Leon, M.D.**

Manager of Clinical Quality

jose.leon@namgt.com

**Kevin Lombardi, M.D., M.P.H.**

Manager of Policy, Research, and Health Promotion

Kevin.lombardi@namgt.com

**Fide Pineda Sandoval, C.H.E.S.**

Training and Technical Assistance Manager

Fide@namgt.com

**Chantel Murray, M.A.**

Manager of Communications

Cmoore@namgt.com

Please contact our team for Training and

Technical Support

703-812-8822

**Olajumoke Oladipo, MPH**

Health Communications and Research Analyst

Olajumoke@namgt.com



National Center for Health in Public Housing



Thank you!