
TOBACCO USE AND CANCER PREVENTION FOR PEOPLE WITH DISABILITIES

Community of Practice (CoP)

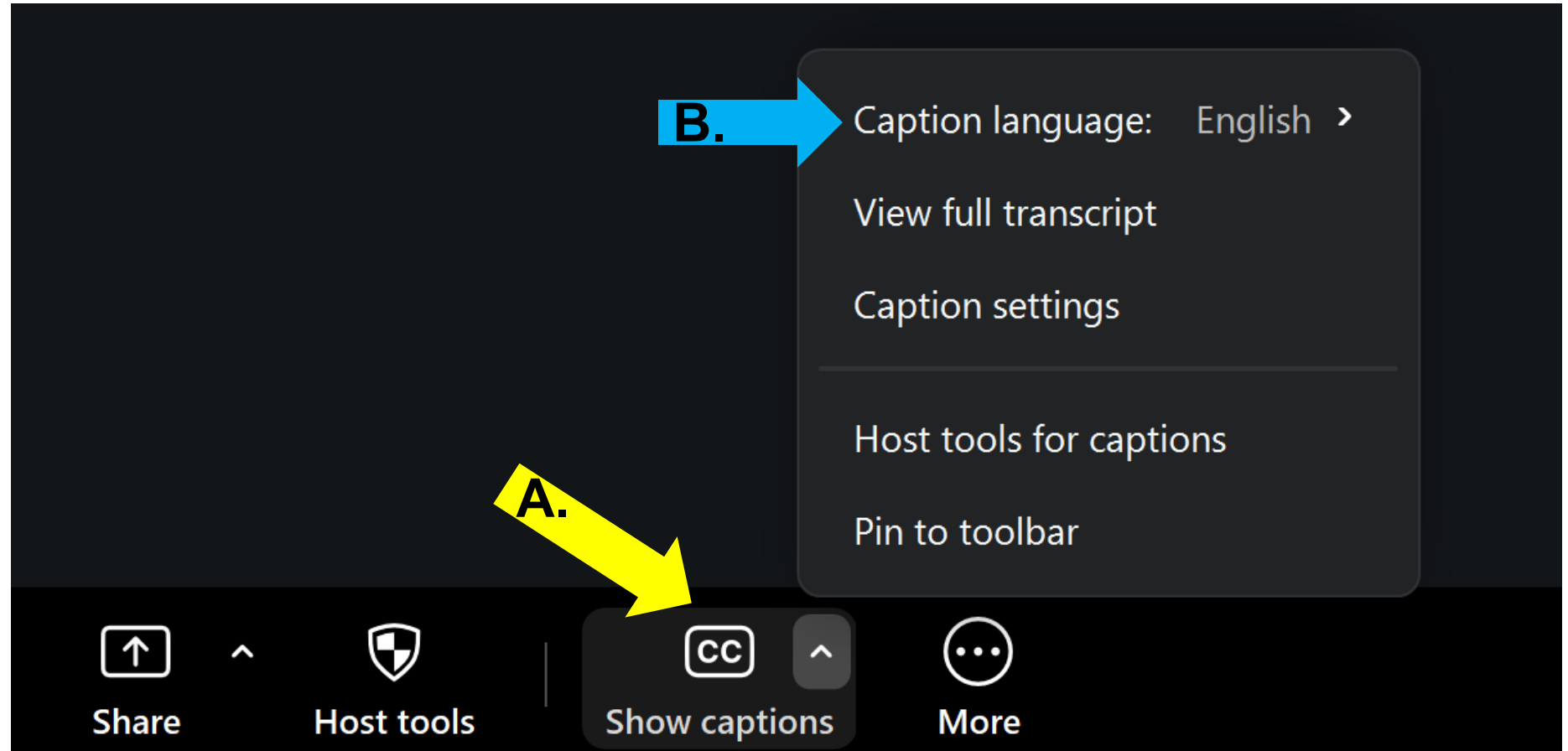
Session 2: Partnering with Disability-Led Organizations



Disability Network
FOR TOBACCO CONTROL
AND CANCER PREVENTION

Enabling Closed Captioning

- **(A)** Click on the “Show captions” button on your Zoom toolbar.
- **(B)** Select “Caption language” to English if necessary.



Housekeeping Items

- All participants muted upon entry
- Engage in chat
- Raise virtual hand if you would like to unmute
- Meeting is being recorded
- Slides and recording link will be sent via email
- *Let us know about you!*
 - State
 - Organization name
 - Title
 - What brings you here today



Pre-session Evaluation



Moderators



Fide Pineda Sandoval,
MPH, CHES
Technical Assistance
Manager

Speakers



Katherine Stone, MPH
Senior Program Manager



Chris Mackey
Senior Project Coordinator,

Learning Objectives

1. Improve knowledge about the intersection of disability, tobacco use, and public housing
2. Identify and collaborate with disability education and service organizations
3. Apply clinical and programmatic strategies to make cessation and prevention programs accessible to people with disabilities
4. Establish systems for monitoring and sustaining partnerships

Building Effective Partnerships with People with Disabilities

Chris Mackey
Senior Project Coordinator
Lakeshore Foundation



WE ARE LAKESHORE

Our vision is a world in which every person has the opportunity to achieve a healthy, active, independent life.

Our mission is to provide opportunity for individuals with a disability to live a healthy lifestyle through physical activity, research, advocacy and health promotion.



LAKESHORE

Homework from Session 1!

Answer in the Chat:

What element or elements of your program are you planning to make more accessible and welcoming to people with disabilities?

**Effective Partnership Requires Effective
Communication**

People with Vision Loss and Service Animals

- For people with vision loss, speak to the person when you approach and identify yourself. State clearly who you are; speak in a normal tone of voice.
- Never touch or distract service animals without asking the person.



People with Hearing Loss

- Gain attention first before starting conversation.
- Look directly at person, face light, speak clearly and in normal tone of voice, and keep your hands away from face.
- Speak directly to individual not interpreter.
- Receive training on the National Telecommunications Relay Service (dial 711).
- Do not talk at the same time as writing a message.
- If you call a participant, let phone ring longer than usual.

People with Speech Disability

- If you do not understand a person, do not pretend. Ask client to repeat information, then repeat it back for confirmation.
- Ask questions requiring short answers or head nod.
- Do not speak for participant or attempt to finish his or her sentences.

People with Mobility Disability

- Wide-ranging effects: can impact balance, stamina, and increase susceptibility to spasticity and pressure sores.
- Do not remove assistive device (cane, crutches, wheelchair, prosthesis, etc.) without permission
- Ask if assistance is needed but wait until it is accepted before helping
- Be aware of distances and terrain



People with Intellectual Disabilities

- Allow time to learn and master new task. Repetition is key!
- Offer assistance with completing forms or understanding written instructions. Wait to accept offer of assistance; do not over-assist or be patronizing.
- Provide extra time for decision-making.
- Use precise language and simple words.
- Ask questions that require brief answers.

Intellectual Disability Tips Continued...

- Treat adults as adults.
- Be patient, flexible, and supportive.
- Take time to understand participant and vice versa.
- Do not pretend to understand if you do not.
- If you are in an area with many distractions, consider moving to a quiet or private location.

Partnering with People with Disabilities

Government/Public Disability Service Agencies

Government/Public disability service agencies.

- Vocational Rehab
- State Department of Mental Health, Services for the Blind or Deaf, Disabilities
- University Centers of Excellence on Developmental Disabilities
- Mayor's Office on Disability
- Schools for the Deaf & Blind
- State Assistive Technology Programs

Disability service organizations

- The Arc
- Easter Seals
- Special Olympics
- Disability-specific organizations
 - Autism Society
 - MS Society
 - Spina Bifida Association

Disability-led Organizations

- Centers for Independent Living
- Consortium of Citizens with Disabilities
- ADAPT chapters
- American Federation for the Blind
- Self Advocates Becoming Empowered (SABE USA)

Scan the Code to Find the Disability Organization in Your State

Easter Seals



The Arc



Special Olympics



Find Centers for Independent Living (CIL) and Assistive Technology Programs in Your State

Centers for Independent Living



State Assistive Technology Programs



Tap Into Those with Inclusion Expertise



From Schools

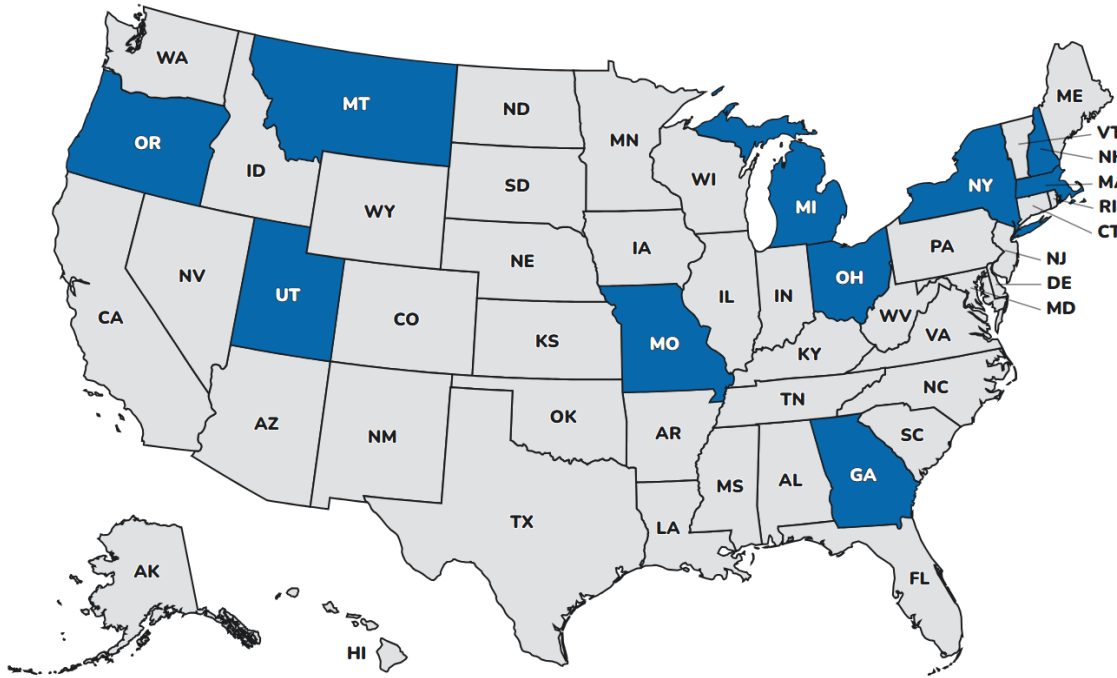


In Healthcare



**From Community
Organizations**

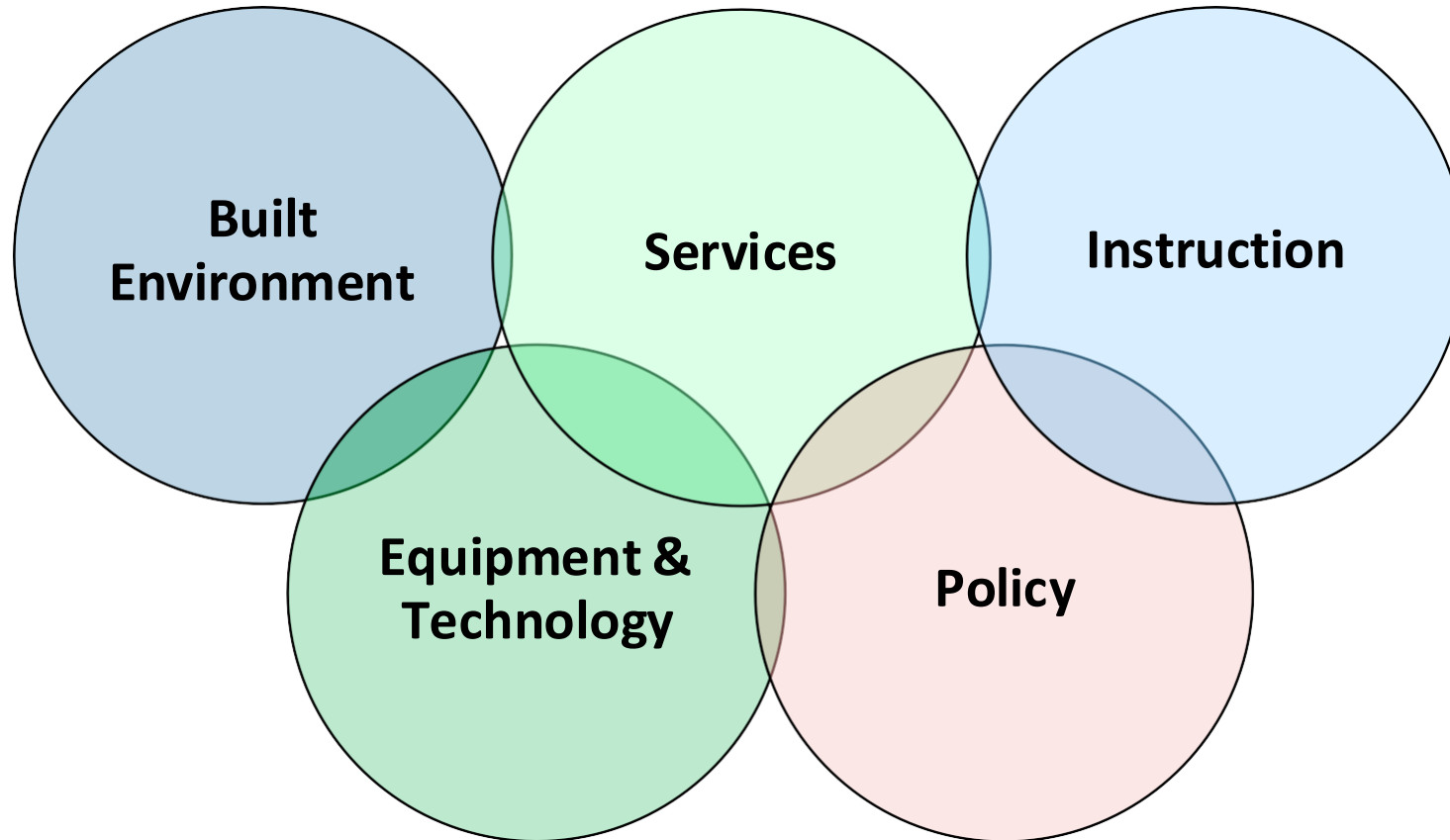
Disability and Health-Funded States



Sites funded under CDC-RFA-DD21-2103

- Georgia State University Foundation Inc.
- Massachusetts Department of Public Health
- Michigan Department of Health and Human Services
- The Curators of the University of Missouri on behalf of UM-Kansas City
- Montana Department of Public Health and Human Services
- University System of New Hampshire
- Health Research Inc./New York State
- Ohio State University
- Oregon Health and Science University
- Utah Department of Health

Remember the Domains



Source: Rimmer, J.H., Vanderbom, K.A., Bandini, L.G. et al. GRAIDs: a framework for closing the gap in the availability of health promotion programs and interventions for people with disabilities. *Implementation Sci* 9, 100 (2014). <https://doi.org/10.1186/s13012-014-0100-5>

Think About How You Want to Address a Barrier

Barrier addressed	Strategy	Why strategy was chosen
Services: Alternative Formats	<ol style="list-style-type: none"><li data-bbox="886 525 1656 739">1. Identify a partner to support all strategies throughout<li data-bbox="886 791 1656 848">2. Budget for material creation<li data-bbox="886 899 1656 956">3. Identify a vendor if needed<li data-bbox="886 1008 1656 1136">4. Utilize partners to review materials<li data-bbox="886 1188 1656 1316">5. Produce/acquire materials and promote	This strategy was chosen because it was achievable with support to create alternative formats and would be beneficial to all audiences

Create an Action Plan

Action Steps	Persons Responsible	Timeline	Measure of Success	Partner and Needed Support
Progress				

A

Acknowledge and respect individual experiences and abilities.



L

Learn about different disability types.

L

Leverage your influence to promote accessibility and inclusion.

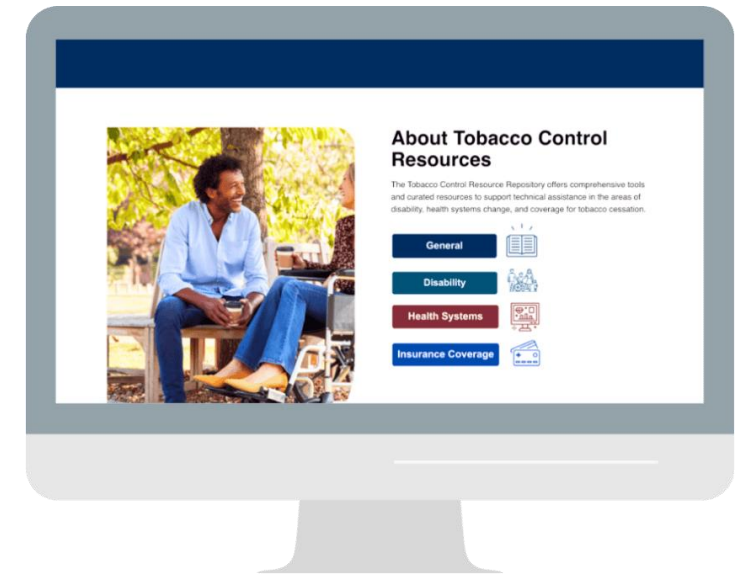


Y

Yield the floor to people with disabilities to help identify and eliminate barriers.

Disability Section of NACDD's Tobacco Resource Library

- Look for fact sheet: “Access Starts with Partnership”



<https://tobaccoresources.chronicdisease.org/resource-category/disability/>

Q & A SESSION

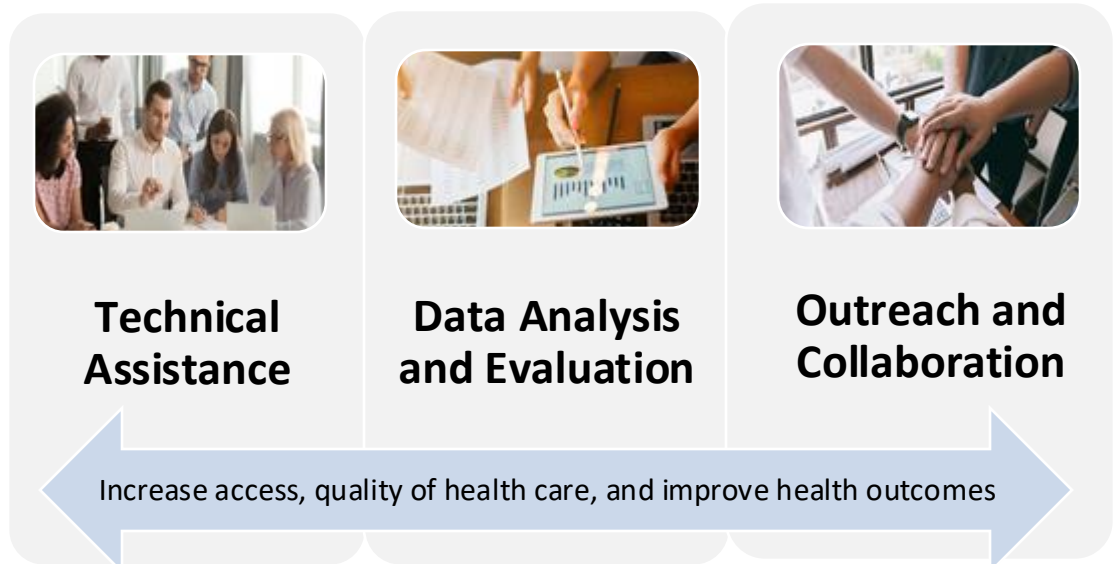


COMPLETE OUR POST EVALUATION



NATIONAL CENTER FOR HEALTH IN PUBLIC HOUSING

- This webinar is supported by the Health Resources and Services Administration (HRSA) of the U.S. Department of Health and Human Services (HHS) as part of an award totaling \$668,000 with 0% financed with non-governmental sources. The contents are those of the author(s) and do not necessarily represent the official views of, nor an endorsement, by HRSA, HHS, or the U.S. Government. For more information, please visit [HRSA.gov](https://www.hrsa.gov).



Upcoming Sessions Reminder

Tobacco Use and Cancer Prevention for People with Disabilities	Topic	Date & Time
Session 3	Implementing Tobacco Cessation and Cancer Prevention	04/23/2026 1:00 – 2:00 pm EDT
Session 4	Sustainability, Evaluation and Continuous Improvement	04/30/2026 1:00 – 2:00 pm EDT

Registration link: <https://us06web.zoom.us/meeting/register/GJPdgjn5TIO7HM0K64Ksyg>

CONTACT INFORMATION

Robert Burns

Program Director

Bobburns@namgt.com

Jose Leon, M.D.

Manager of Clinical Quality

jose.leon@namgt.com

Kevin Lombardi, M.D., M.P.H.

Manager of Policy, Research, and Health Promotion

Kevin.lombardi@namgt.com

Fide Pineda Sandoval, MPH, C.H.E.S.

Training and Technical Assistance Manager

Fide@namgt.com

Olajumoke Oladipo, MPH

Health Communications and Research Analyst

Olajumoke@namgt.com

Please contact our team for Training and Technical Support

703-812-8822

THANK YOU!

