
TOBACCO USE AND CANCER PREVENTION FOR PEOPLE WITH DISABILITIES

Community of Practice (CoP)

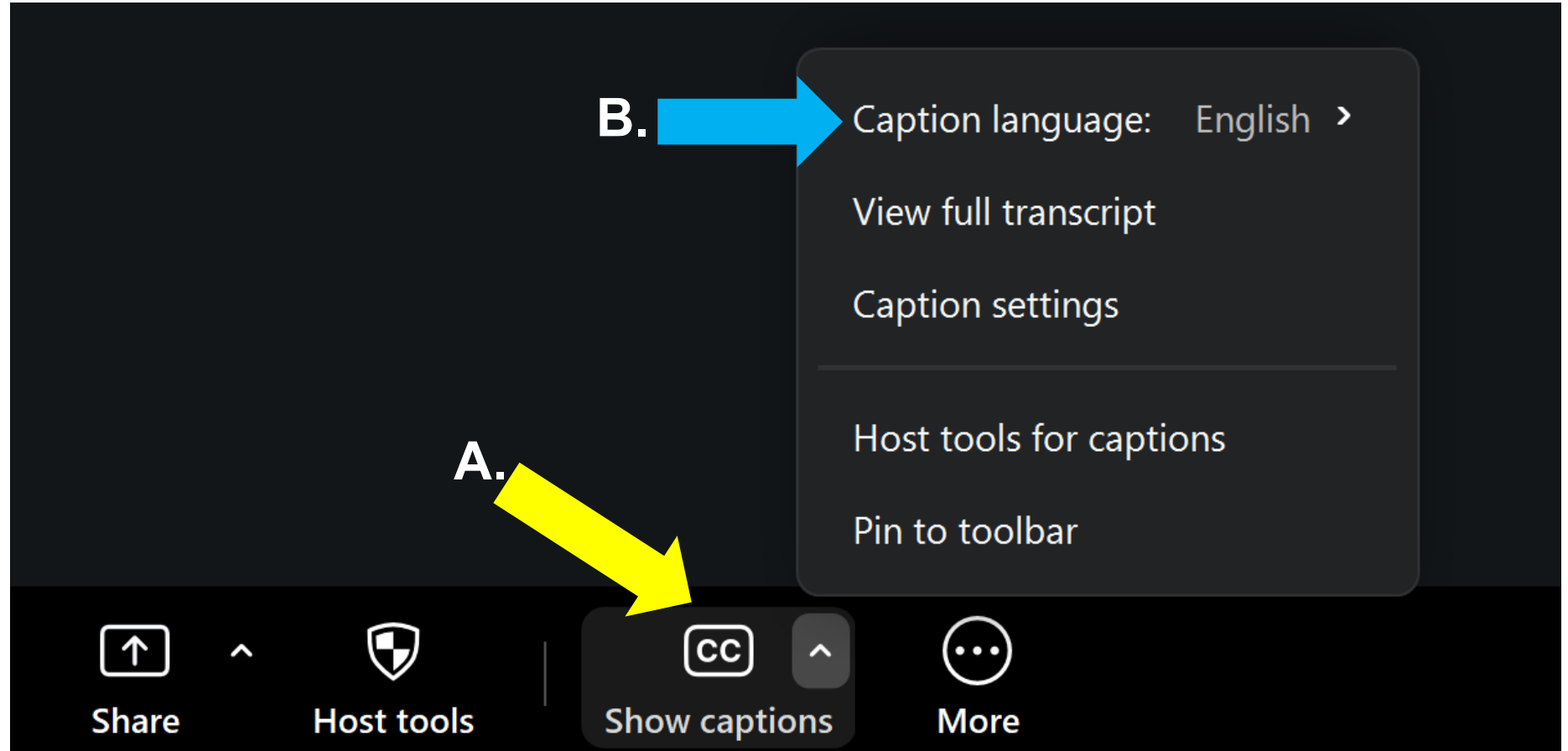
Session 4: Sustainability, Evaluation, and Continuous Improvement



Disability Network
FOR TOBACCO CONTROL
AND CANCER PREVENTION

Enabling Closed Captioning

- **(A)** Click on the “Show captions” button on your Zoom toolbar.
- **(B)** Select “Caption language” to English if necessary.



Housekeeping Items

- All participants muted upon entry
- Engage in chat
- Raise virtual hand if you would like to unmute
- Meeting is being recorded
- Slides and recording link will be sent via email
- *Let us know about you!*
 - State
 - Organization name
 - Title
 - What brings you here today



Moderators



Jose Leon, MD
Chief Medical Officer



**Fide Pindea Sandoval,
MPH, CHES**
Training and Technical
Assistance Manager



Olajumoke Oladipo, MPH
Health Communications
and Research Analyst

Speaker



Chris Mackey
Senior Project Coordinator in
Community Health
Lakeshore Foundation

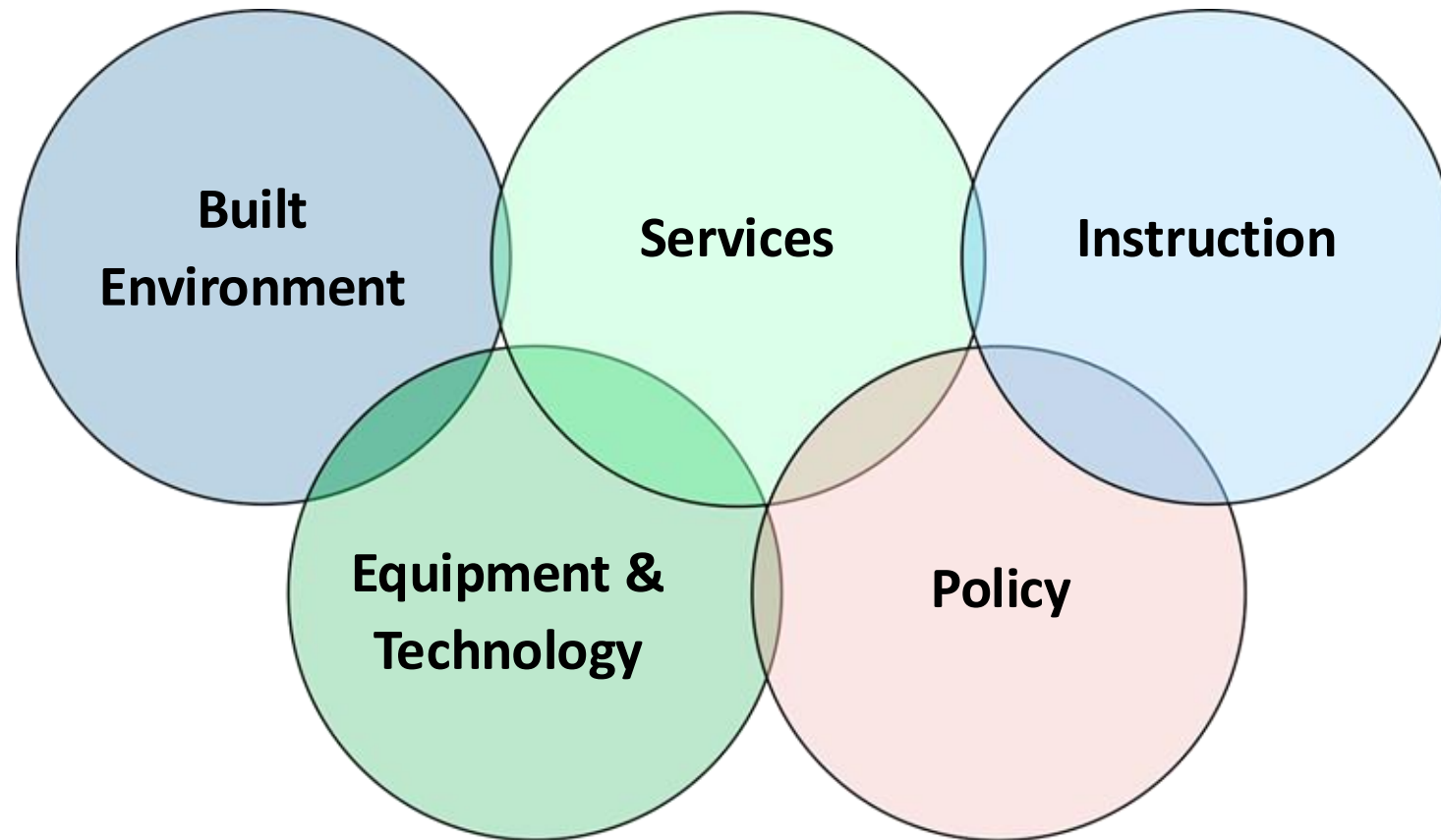
Sustainability, Evaluation, and Continuous Improvement

Chris Mackey

Senior Project Coordinator in Community Health

Lakeshore Foundation

Accessibility Domains



Source: Rimmer, J.H., Vanderbom, K.A., Bandini, L.G. et al. GRAIDs: a framework for closing the gap in the availability of health promotion programs and interventions for people with disabilities. *Implementation Sci* 9, 100 (2014). <https://doi.org/10.1186/s13012-014-0100-5>

Review/Definitions

From CDC's "Sustainability Planning Guide for Healthy Communities"

"Sustainability is the ongoing capacity and resolve to work together to establish, advance, and maintain effective strategies that continuously improve health and quality of life for all."

Source: Centers for Disease Control and Prevention (U.S.). Healthy Communities Program. (2012). A Sustainability Planning Guide for Healthy Communities. <https://stacks.cdc.gov/view/cdc/11700>

Partnership is Paramount!

Always Start with Partnership

- Establish partnerships early
 - Attend and present at conferences, go to health fairs
 - Look for organizations with the reach you need (Centers for Independent Living (CILs), State Developmental Disabilities Councils, Assistive Technology (AT) Programs)
 - Seek mutually beneficial funding opportunities and goals
 - Gather input (focus groups, surveys, etc.) from people with disabilities and caregivers/support personnel

Find Centers for Independent Living (CIL) and Assistive Technology (AT) Programs in Your State

CIL



State AT Programs



Scan the Code to Find the Disability Organization in Your State

Easter Seals



The Arc



Special Olympics



Budgeting

- **Prioritize collaboration with disability partners**
- **Examples:**
 - Assistive technology (e.g., assistive listening devices, accessible apps)
 - Diagnostic equipment as necessary (e.g., wheelchair-accessible scales)
 - Sign language (or other) interpretation services
 - Creating alternate formats of important documents or educational materials
 - Web site and/or app accessibility updates
 - Needed renovations

Selected Assessment Tools

- **NCHPAD's Community Health Assessment Tool**
 - Organizational Assessment: <https://inclusion.nchpad.org/pdfs/04-CHII-Organizational-Assessment-Google-Version-downloaded-22jul2019.pdf>
 - On-Site Assessment: <https://inclusion.nchpad.org/pdfs/05-CHII-On-Site-Assessment-Google-Version-downloaded-on-22jul2019.pdf>
- **Provider Self-Audit Tool from Special Olympics**
 - <https://inclusivehealth.specialolympics.org/tools-resources/inclusive-provider-self-audit-tool>
- **Americans with Disabilities Act Checklists for Existing Facilities**
 - www.adachecklist.org

Build Your Skills

- With Disability Partners, Identify Topics that Need to be Addressed on a Regular Basis:
 - Accessibility reviews/checks
 - Disability awareness training
 - Being a sighted guide for someone with blindness
 - Learning some American Sign Language words or phrases
 - Stay updated on requirements of the Americans with Disabilities Act and other disability rights laws

Embed Access and Representation into Communication

- Review materials with disability partners
- Incorporate images of actual people with disabilities
- Check and update website and other ICT for accessibility
 - See www.webaim.org or www.section508.gov
 - Include social media that includes and targets people with disabilities

Sustainability Strategy: Disability-focused Program, Policy, System & Environmental (PPSE) Changes

- **In Your Organization/Program**

- Include people with disabilities/disability organizations on governing or advisory boards
- Evaluate your policies to ensure continual focus on accessibility
- Create policies focused on cost considerations related to inclusion
- Identify partners that support inclusion and create procedures to obtain services (e.g., sign language interpreter services or accessible transportation)

Example Organizational Policies

- Examples
 - A stated commitment to addressing the needs of people with disabilities
 - Leadership or advisory structure reflects involvement of people with disabilities
 - A published/known procedure for obtaining accommodations for people with disabilities
 - Do you have a published policy requiring staff training on the various issues related to including people with disabilities into your practice?

Do Not Forget About Your Plan of Action!

Barrier	Strategy for Removal	Partner	Person(s) Responsible	Timeline	Action Steps
Cessation education materials not accessible to patients with blindness	Create selected materials in Braille and large print	Local Center for Independent Living, School for the Blind	Clinical Director, operations manager	3 months	<ol style="list-style-type: none">1. Decide materials to be created in alternate format with disability partner2. Meet with partners to obtain estimate and discuss timeline3. Submit selected materials for modification4. Notify public of availability on website, Quit Line and in clinic spaces and social media

National Association of Chronic Disease Directors (NACDD) Tobacco Resource Library

- A new digital hub to support public health professionals in their efforts to reduce tobacco use and improve health outcomes.
- Offers a curated collection of tools and resources focused on several critical areas of tobacco prevention and cessation:
 - **General Resources**
 - **Disability Integration**
 - **Health Systems Change**
 - **Insurance Coverage**



<https://tobaccoresources.chronicdisease.org>

Case Study



Darren is a 50-year-old single male that is unemployed with a **moderate intellectual disability** who lives with his 72-year-old mother in public housing. His mother serves as his primary caregiver and provides supervision and support with daily routines.

Darren has smoked cigarettes since the age of 16. Over time, smoking has become a highly structured part of his day, and he now smokes approximately **one cigarette every hour during waking hours**. Because of concerns about fire safety in the home, his cigarettes and lighter are kept in a locked drawer by his mother, who gives him a cigarette each hour upon request. This arrangement, while intended to reduce safety risks, has also reinforced Darren's long-standing smoking routine.

For several years, Darren has experienced a persistent chronic cough. During an annual health visit three years ago, a nurse suggested that smoking might be contributing to his respiratory symptoms. Darren perceived the conversation as criticism rather than support, became distressed, and has avoided returning to the clinic since that visit. As a result, he has not seen either his primary care provider or nursing staff for follow-up evaluation. Today, Darren and his mother are at your health center because his mother wants to help him to stop smoking.

Case Study Questions



1. What are the main considerations for an intervention in Darren's case? Is there additional information about Darren that you need to know?
2. How can you adapt your smoking cessation services so patients with intellectual disabilities feel supported rather than judged?

Case Study Questions



3. How would you tailor a conversation on tobacco cessation with Darren? What kind of adaptation do you need for Darren?
4. Do you see any ethical considerations in this case?
5. Who else in the community would you work with to help Darren?

What Will You Do?



- **In the chat...**

- Name a disability partner or partners you have contacted or will contact?
- What accessibility issue will you be addressing?

Q & A SESSION



COMPLETE OUR POST EVALUATION



CONTACT INFORMATION

Robert Burns

Program Director

Bobburns@namgt.com

Jose Leon, M.D.

Manager of Clinical Quality

jose.leon@namgt.com

Kevin Lombardi, M.D., M.P.H.

Manager of Policy, Research, and Health Promotion

Kevin.lombardi@namgt.com

Fide Pineda Sandoval, MPH, C.H.E.S.

Training and Technical Assistance Manager

Fide@namgt.com

Olajumoke Oladipo, MPH

Health Communications and Research Analyst

Olajumoke@namgt.com

Please contact our team for Training and Technical

Support

703-812-8822

THANK YOU!

